

Specifications:

Material And Finish:

Insulator:PBT UL94V-0 Color:Black
 Contact:Brass
 Plated:See Ordering Information

Rating:

Current Rating:3.0 Amp
 Voltage Rating:250V AC/DC
 Operating Temperature Range:-40~+105°C

Electrical:

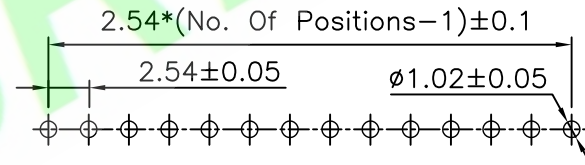
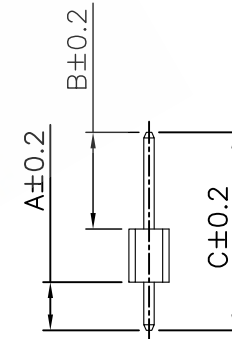
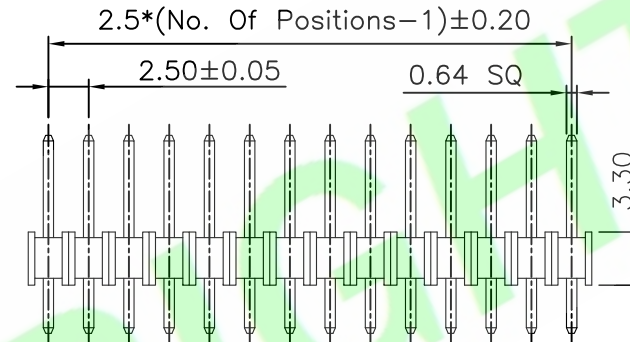
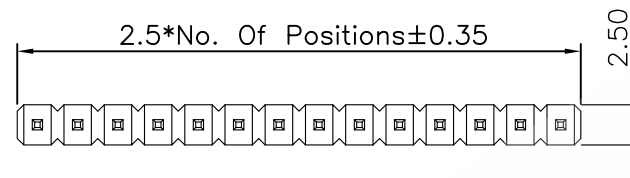
Contact resistance:20m Ohm Max
 Insulator resistance:1000M ohm min.
 Withstanding Voltage:500V AC/Minute

Ordering Information

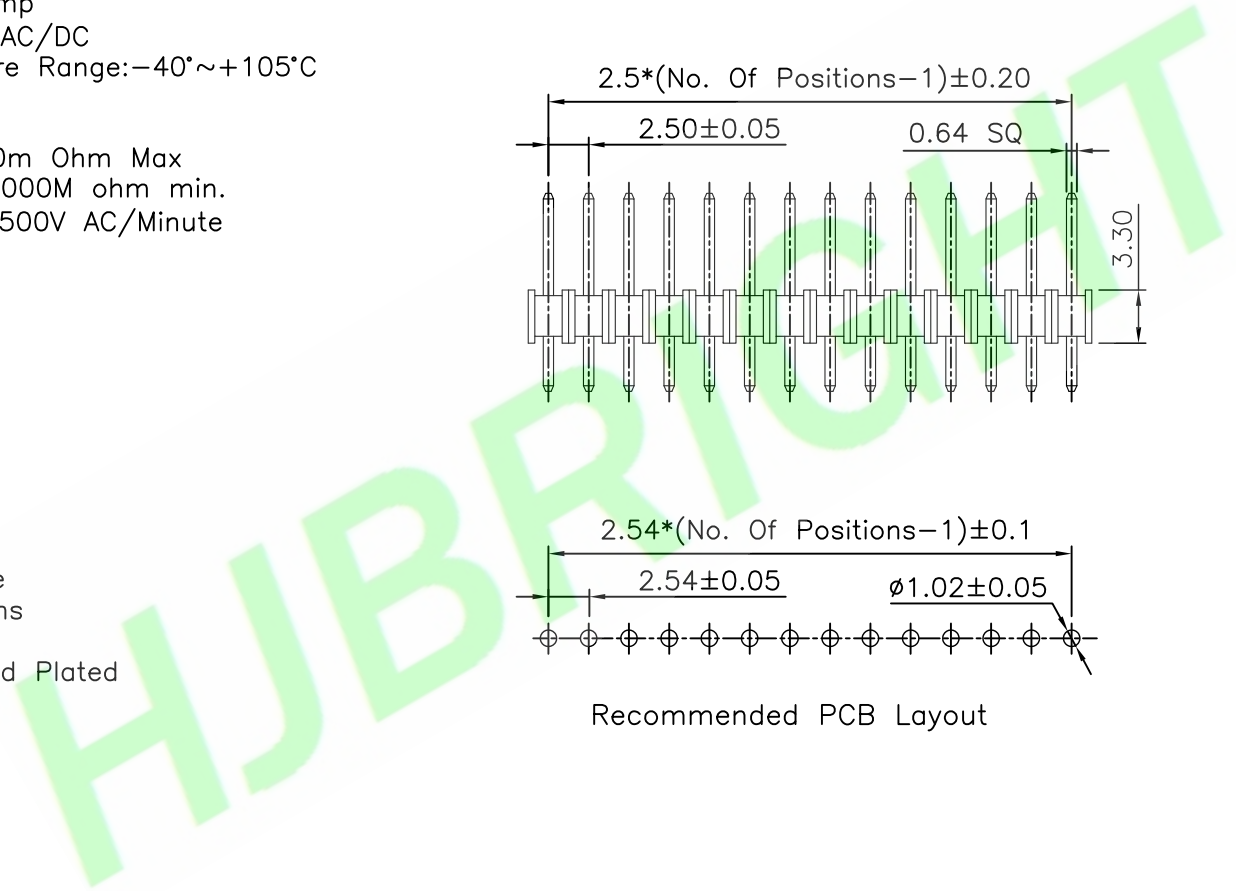
25011S-XXXXXX-X

1 2 3 4 5

- 1: — Series No.
- 2: — S: Straight Type
- 3: — No. of Positions
- 4: — A: Gold Flash
 H: Selective Gold Plated
 Q: Tin Plated
- 5: — A: In bag
 B: In Tube



Recommended PCB Layout



5X			
4X			
3X			
2X			
1X	ORIGINAL	joy chen	
REV.	DESCRIPTION	DR.BY	ECN. NO.

DR.BY:	joy chen
CHKD.:	Tony
APPD.:	Billy

GENERAL TOLERANCE:		PART NO : 25011S-XXXXXX-X
LINEAR	ANGLES	
X.: ±0.30	X': ±5.0°	
X.X: ±0.20	X.X': ±3.0°	
X.XX: ±0.15	X.XX': ±2.0°	
X.XXX: ±0.10	X.XXX': ±1.0°	DATE: 24-May-2008

HJBRIGHT 東莞市華晶電子有限公司
 BRIGHT-E ELECTRONIC TECHNOLOGY LIMITED

DWG. NO.: RD0805-122
 TITLE : 2.50mm Pitch Pin Header Straight Type

SHEET: 1/1
 SCALE: 1:1
 UNIT: mm

THIRD ANGLE PROJECTION

A4