

# Test Report

No.: SZXEC23002810139

Date: Dec 04, 2023

Page 1 of 10

Client Name: BRIGHT-E ELECTRONIC TECHNOLOGY LIMITED

Client Address: NO.1 HE SHI ROAD, HUANG NI TANG, CHANGPING TOWN, DONGGUAN CITY, GUANGDONG PROVINCE

Sample Name: Brass PIN needle: nickel plated bottom, gold plated surface

Client Ref. Information: Please see attachments

The above sample(s) and information were provided by the client.

SGS Job No.: SZP23-025858

Sample Receiving Date: Nov 13, 2023

Testing Period: Nov 13, 2023 ~ Nov 20, 2023

Test Requested: Select test(s) as requested by the client.

Test Method(s): Please refer to next page(s).

Test Result(s): Please refer to next page(s).

## Summary:

<p>EU RoHS Directive (EU) 2015/863 amending Annex II to Directive 2011/65/EU- Lead, Mercury, Cadmium, Hexavalent chromium, Polybrominated biphenyls (PBBs), Polybrominated diphenyl ethers (PBDEs), Bis(2-ethylhexyl) phthalate (DEHP), Butyl benzyl phthalate (BBP), Dibutyl phthalate (DBP) and Diisobutyl phthalate (DIBP)</p>	<p>Pass</p>
---	-------------

Signed for and on behalf of  
SGS-CSTC Standards Technical Services Co., Ltd. Shenzhen Branch

*Fay*

Fay Yuan  
Approved Signatory

scan to see the report



3721A23A



SGS-CSTC Standards Technical Services Co., Ltd.  
Shenzhen Branch Testing Center Chemical Laboratory

Unless otherwise agreed in writing, this document is issued by the Company subject to its General Conditions of Service printed overleaf, available on request or accessible at <http://www.sgs.com/en/Terms-and-Conditions.aspx> and, for electronic format documents, subject to Terms and Conditions for Electronic Documents at <http://www.sgs.com/en/Terms-and-Conditions/Terms-e-Documents.aspx>. Attention is drawn to the limitation of liability, indemnification and jurisdiction issues defined therein. Any holder of this document is advised that information contained hereon reflects the Company's findings at the time of its intervention only and within the limits of Client's instructions, if any. The Company's sole responsibility is to its Client and this document does not exonerate parties to a transaction from exercising all their rights and obligations under the transaction documents. This document cannot be reproduced except in full, without prior written approval of the Company. Any unauthorized alteration, forgery or falsification of the content or appearance of this document is unlawful and offenders may be prosecuted to the fullest extent of the law. Unless otherwise stated the results shown in this test report refer only to the sample(s) tested.

Attention: To check the authenticity of testing /inspection report & certificate, please contact us at telephone: (86-755) 8307 1443, or email: [CN.Doccheck@sgs.com](mailto:CN.Doccheck@sgs.com)

Room 101-901, Plant 4 & Room 101, Plant 2 & Room 101, Plant 3 & Room 301-501, Plant 3, Jianghao (Bantian) Industrial Plant Area, No. 430, Jihua Road, Bantian Community, Bantian Street, Longgang District, Shenzhen, Guangdong, China 518129 [www.sgs.com](http://www.sgs.com)  
中国·广东·深圳市龙岗区坂田街道坂田社区吉华路430号江灏(坂田)工业厂区厂房4号101-901、2号101、3号101、3号301-501 邮编:518129 t:(86-755)25328888 sgs.china@sgs.com

**Test Result(s):**

Test Part Description:

SN ID	Sample No.	SGS Sample ID	Description
SN1	A20	SZX23-0028101-0001.C020	Golden plated metal

Remarks:

- (1) 1 mg/kg = 1 ppm = 0.0001%
- (2) MDL = Method Detection Limit
- (3) ND = Not Detected (< MDL)
- (4) "-" = Not Regulated

**EU RoHS Directive (EU) 2015/863 amending Annex II to Directive 2011/65/EU- Lead, Mercury, Cadmium, Hexavalent chromium, Polybrominated biphenyls (PBBs), Polybrominated diphenyl ethers (PBDEs), Bis(2-ethylhexyl) phthalate (DEHP), Butyl benzyl phthalate (BBP), Dibutyl phthalate (DBP) and Diisobutyl phthalate (DIBP)**

Test Method: With reference to IEC 62321-4:2013+AMD1:2017, IEC 62321-5:2013, IEC 62321-7-1:2015, IEC 62321-6:2015 and IEC62321-8:2017, analysis was performed by ICP-OES, UV-Vis and GC-MS.

Test Item(s)	Limit	Unit(s)	MDL	A20
Cadmium(Cd)	100	mg/kg	2	ND
Lead(Pb)	1000	mg/kg	2	10
Mercury(Hg)	1000	mg/kg	2	ND
Hexavalent Chromium (Cr(VI)) ▼	-	µg/cm <sup>2</sup>	0.10	ND
Polybromobiphenyl (PBBs)	1000	mg/kg	-	ND
Monobromobiphenyl (MonoBB)	-	mg/kg	5	ND
Dibromobiphenyl (DiBB)	-	mg/kg	5	ND
Tribromobiphenyl (TriBB)	-	mg/kg	5	ND
Tetrabromobiphenyl (TetraBB)	-	mg/kg	5	ND
Pentabromobiphenyl (PentaBB)	-	mg/kg	5	ND
Hexabromobiphenyl (HexaBB)	-	mg/kg	5	ND
Heptabromobiphenyl (HeptaBB)	-	mg/kg	5	ND
Octabromobiphenyl (OctaBB)	-	mg/kg	5	ND
Nonabromobiphenyl (NonaBB)	-	mg/kg	5	ND
Decabromobiphenyl (DecaBB)	-	mg/kg	5	ND
Polybromodiphenyl ether(PBDEs)	1000	mg/kg	-	ND
Monobromodiphenylether (MonoBDE)	-	mg/kg	5	ND
Dibromodiphenylether (DiBDE)	-	mg/kg	5	ND
Tribromodiphenylether (TriBDE)	-	mg/kg	5	ND
Tetrabromodiphenylether (TetraBDE)	-	mg/kg	5	ND
Pentabromodiphenylether (PentaBDE)	-	mg/kg	5	ND
Hexabromodiphenylether (HexaBDE)	-	mg/kg	5	ND
Heptabromodiphenylether (HeptaBDE)	-	mg/kg	5	ND
Octabromodiphenylether (OctaBDE)	-	mg/kg	5	ND
Nonabromodiphenylether (NonaBDE)	-	mg/kg	5	ND
Decabromodiphenylether (DecaBDE)	-	mg/kg	5	ND
Dibutyl Phthalate(DBP)	1000	mg/kg	50	ND
Benzyl Butyl Phthalate(BBP)	1000	mg/kg	50	ND



SGS-CSTC Standards Technical Services Co., Ltd.  
Shenzhen Branch Testing Center-Chemical Laboratory

Unless otherwise agreed in writing, this document is issued by the Company subject to its General Conditions of Service printed overleaf, available on request or accessible at <http://www.sgs.com/en/Terms-and-Conditions.aspx> and, for electronic format documents, subject to Terms and Conditions for Electronic Documents at <http://www.sgs.com/en/Terms-and-Conditions/Terms-e-Documents.aspx>. Attention is drawn to the limitation of liability, indemnification and jurisdiction issues defined therein. Any holder of this document is advised that information contained hereon reflects the Company's findings at the time of its intervention only and within the limits of Client's instructions, if any. The Company's sole responsibility is to its Client and this document does not exonerate parties to a transaction from exercising all their rights and obligations under the transaction documents. This document cannot be reproduced except in full, without prior written approval of the Company. Any unauthorized alteration, forgery or falsification of the content or appearance of this document is unlawful and offenders may be prosecuted to the fullest extent of the law. Unless otherwise stated the results shown in this test report refer only to the sample(s) tested.

Attention: To check the authenticity of testing /inspection report & certificate, please contact us at telephone: (86-755) 8307 1443, or email: [CN.Doccheck@sgs.com](mailto:CN.Doccheck@sgs.com)

Room 101-901, Plant 4 & Room 101, Plant 2 & Room 101, Plant 3 & Room 301-501, Plant 3, Jianghao (Banian) Industrial Plant Area, No. 430, Jihua Road, Banian Community, Banian Street, Longgang District, Shenzhen, Guangdong, China 518129 [www.sgs.com](http://www.sgs.com)  
中国·广东·深圳市龙岗区坂田街道坂田社区吉华路430号江灏(坂田)工业区厂房4号101-901、2号101、3号101、3号301-501 邮编:518129 t(86-755) 25328888 [sgs.china@sgs.com](mailto:sgs.china@sgs.com)

# Test Report

No.: SZXEC23002810139

Date: Dec 04, 2023

Page 3 of 10

Test Item(s)	Limit	Unit(s)	MDL	A20
Bis-(2-ethylhexyl) Phthalate(DEHP)	1000	mg/kg	50	ND
Diisobutyl Phthalate(DIBP)	1000	mg/kg	50	ND

**Notes:**

- (1) The maximum permissible limit is quoted from RoHS Directive (EU) 2015/863.
  - (2) IEC 62321 series is equivalent to EN 62321 series.
  - (3) ▼ = a. The sample is positive for Cr(VI) if the Cr(VI) concentration is greater than 0.13 µg/cm<sup>2</sup>. The sample coating is considered to contain Cr(VI)
  - b. The sample is negative for Cr(VI) if Cr(VI) is ND (concentration less than 0.10 µg/cm<sup>2</sup>). The coating is considered a non-Cr(VI) based coating
  - c. The result between 0.10 µg/cm<sup>2</sup> and 0.13 µg/cm<sup>2</sup> is considered to be inconclusive-unavoidable coating variations may influence the determination.
- Information on storage conditions and production date of the tested sample is unavailable and thus Cr(VI) results represent status of the sample at the time of testing.
- Unless otherwise stated, the decision rule for conformity reporting is based on Binary Statement for Simple Acceptance Rule (w=0) stated in ILAC-G8:09/2019.



Unless otherwise agreed in writing, this document is issued by the Company subject to its General Conditions of Service printed overleaf, available on request or accessible at <http://www.sgs.com/en/Terms-and-Conditions.aspx> and, for electronic format documents, subject to Terms and Conditions for Electronic Documents at <http://www.sgs.com/en/Terms-and-Conditions/Terms-e-Documents.aspx>. Attention is drawn to the limitation of liability, indemnification and jurisdiction issues defined therein. Any holder of this document is advised that information contained hereon reflects the Company's findings at the time of its intervention only and within the limits of Client's instructions, if any. The Company's sole responsibility is to its Client and this document does not exonerate parties to a transaction from exercising all their rights and obligations under the transaction documents. This document cannot be reproduced except in full, without prior written approval of the Company. Any unauthorized alteration, forgery or falsification of the content or appearance of this document is unlawful and offenders may be prosecuted to the fullest extent of the law. Unless otherwise stated the results shown in this test report refer only to the sample(s) tested.

**Attention: To check the authenticity of testing /inspection report & certificate, please contact us at telephone: (86-755) 8307 1443, or email: CN.Doccheck@sgs.com**

SGS-CSTC Standards Technical Services Co., Ltd.  
Shenzhen Branch Testing Center Chemical Laboratory

Room 101-901, Plant 4 & Room 101, Plant 2 & Room 101, Plant 3 & Room 301-501, Plant 3, Jianghao (Bantian) Industrial Plant Area, No. 430, Jihua Road, Bantian Community, Bantian Street, Longgang District, Shenzhen, Guangdong, China 518129 www.sgs.com.cn  
中国·广东·深圳市龙岗区坂田街道坂田社区吉华路430号江灏(坂田)工业厂区厂房4号101-901、2号101、3号101、3号301-501 邮编:518129 t(86-755) 25328888 sgs.china@sgs.com

### Elements Testing Flow Chart

These samples were dissolved totally by pre-conditioning method according to below flow chart.



Unless otherwise agreed in writing, this document is issued by the Company subject to its General Conditions of Service printed overleaf, available on request or accessible at <http://www.sgs.com/en/Terms-and-Conditions.aspx> and, for electronic format documents, subject to Terms and Conditions for Electronic Documents at <http://www.sgs.com/en/Terms-and-Conditions/Terms-e-Documents.aspx>. Attention is drawn to the limitation of liability, indemnification and jurisdiction issues defined therein. Any holder of this document is advised that information contained hereon reflects the Company's findings at the time of its intervention only and within the limits of Client's instructions, if any. The Company's sole responsibility is to its Client and this document does not exonerate parties to a transaction from exercising all their rights and obligations under the transaction documents. This document cannot be reproduced except in full, without prior written approval of the Company. Any unauthorized alteration, forgery or falsification of the content or appearance of this document is unlawful and offenders may be prosecuted to the fullest extent of the law. Unless otherwise stated the results shown in this test report refer only to the sample(s) tested.

**Attention: To check the authenticity of testing /inspection report & certificate, please contact us at telephone: (86-755) 8307 1443, or email: [CN.Doccheck@sgs.com](mailto:CN.Doccheck@sgs.com)**

SGS-CSTC Standards Technical Services Co., Ltd.  
Shenzhen Branch Testing Center Chemical Laboratory

Room 101-901, Plant 4 & Room 101, Plant 2 & Room 101, Plant 3 & Room 301-501, Plant 3, Jianghao (Banian) Industrial Plant Area, No. 430, Jihua Road, Banian Community, Banian Street, Longgang District, Shenzhen, Guangdong, China 518129 [www.sgs.com](http://www.sgs.com)  
中国·广东·深圳市龙岗区坂田街道坂田社区吉华路430号江源(坂田)工业区厂房4号101-901、2号101、3号301-501 邮编:518129 t:(86-755) 25328888 [sgs.china@sgs.com](mailto:sgs.china@sgs.com)

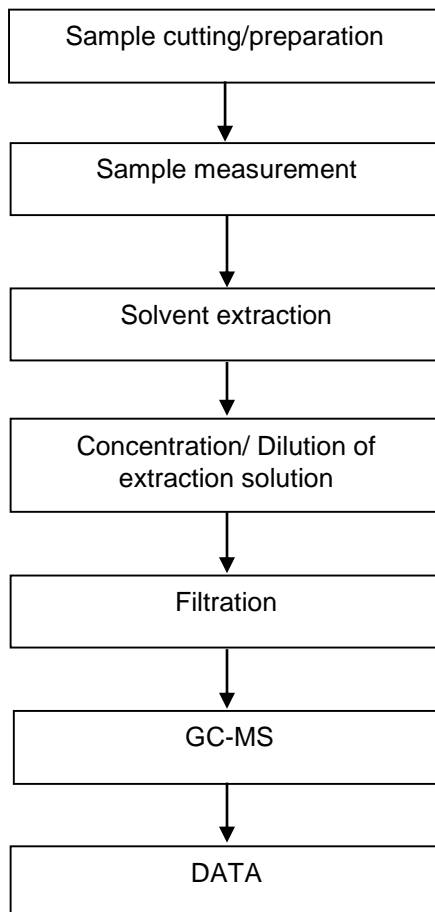
**Hexavalent Chromium (Cr(VI)) Testing Flow Chart**



Unless otherwise agreed in writing, this document is issued by the Company subject to its General Conditions of Service printed overleaf, available on request or accessible at <http://www.sgs.com/en/Terms-and-Conditions.aspx> and, for electronic format documents, subject to Terms and Conditions for Electronic Documents at <http://www.sgs.com/en/Terms-and-Conditions/Terms-e-Documents.aspx>. Attention is drawn to the limitation of liability, indemnification and jurisdiction issues defined therein. Any holder of this document is advised that information contained hereon reflects the Company's findings at the time of its intervention only and within the limits of Client's instructions, if any. The Company's sole responsibility is to its Client and this document does not exonerate parties to a transaction from exercising all their rights and obligations under the transaction documents. This document cannot be reproduced except in full, without prior written approval of the Company. Any unauthorized alteration, forgery or falsification of the content or appearance of this document is unlawful and offenders may be prosecuted to the fullest extent of the law. Unless otherwise stated the results shown in this test report refer only to the sample(s) tested.

Attention: To check the authenticity of testing /inspection report & certificate, please contact us at telephone: (86-755) 8307 1443, or email: [CN.Doccheck@sgs.com](mailto:CN.Doccheck@sgs.com)

**PBBs/PBDEs Testing Flow Chart**



SGS-CSTC Standards Technical Services Co., Ltd.  
Shenzhen Branch Testing Center Chemical Laboratory

Unless otherwise agreed in writing, this document is issued by the Company subject to its General Conditions of Service printed overleaf, available on request or accessible at <http://www.sgs.com/en/Terms-and-Conditions.aspx> and, for electronic format documents, subject to Terms and Conditions for Electronic Documents at <http://www.sgs.com/en/Terms-and-Conditions/Terms-e-Documents.aspx>. Attention is drawn to the limitation of liability, indemnification and jurisdiction issues defined therein. Any holder of this document is advised that information contained hereon reflects the Company's findings at the time of its intervention only and within the limits of Client's instructions, if any. The Company's sole responsibility is to its Client and this document does not exonerate parties to a transaction from exercising all their rights and obligations under the transaction documents. This document cannot be reproduced except in full, without prior written approval of the Company. Any unauthorized alteration, forgery or falsification of the content or appearance of this document is unlawful and offenders may be prosecuted to the fullest extent of the law. Unless otherwise stated the results shown in this test report refer only to the sample(s) tested.

**Attention: To check the authenticity of testing /inspection report & certificate, please contact us at telephone: (86-755) 8307 1443, or email: [CN.Doccheck@sgs.com](mailto:CN.Doccheck@sgs.com)**  
 Room 101-901, Plant 4 & Room 101, Plant 2 & Room 101, Plant 3 & Room 301-501, Plant 3, Jianghao (Banlian) Industrial Plant Area, No. 430, Jihua Road, Banlian Community, Banlian Street, Longgang District, Shenzhen, Guangdong, China 518129 [www.sgs.com](http://www.sgs.com)  
 中国·广东·深圳市龙岗区坂田街道坂田社区吉华路430号江源(坂田)工业厂区厂房4号101-901、2号101、3号301-501 邮编:518129 t(86-755) 25328888 [sgs.china@sgs.com](mailto:sgs.china@sgs.com)

### Phthalates Testing Flow Chart



Unless otherwise agreed in writing, this document is issued by the Company subject to its General Conditions of Service printed overleaf, available on request or accessible at <http://www.sgs.com/en/Terms-and-Conditions.aspx> and, for electronic format documents, subject to Terms and Conditions for Electronic Documents at <http://www.sgs.com/en/Terms-and-Conditions/Terms-e-Documents.aspx>. Attention is drawn to the limitation of liability, indemnification and jurisdiction issues defined therein. Any holder of this document is advised that information contained hereon reflects the Company's findings at the time of its intervention only and within the limits of Client's instructions, if any. The Company's sole responsibility is to its Client and this document does not exonerate parties to a transaction from exercising all their rights and obligations under the transaction documents. This document cannot be reproduced except in full, without prior written approval of the Company. Any unauthorized alteration, forgery or falsification of the content or appearance of this document is unlawful and offenders may be prosecuted to the fullest extent of the law. Unless otherwise stated the results shown in this test report refer only to the sample(s) tested.

**Attention: To check the authenticity of testing /inspection report & certificate, please contact us at telephone: (86-755) 8307 1443, or email: [CN.Doccheck@sgs.com](mailto:CN.Doccheck@sgs.com)**

SGS-CSTC Standards Technical Services Co., Ltd.  
Shenzhen Branch Testing Center Chemical Laboratory

Room 101-901, Plant 4 & Room 101, Plant 2 & Room 101, Plant 3 & Room 301-501, Plant 3, Jianghao (Bantian) Industrial Plant Area, No. 430, Jihua Road, Bantian Community, Bantian Street, Longgang District, Shenzhen, Guangdong, China 518129 [www.sgs.com](http://www.sgs.com)  
中国·广东·深圳市龙岗区坂田街道坂田社区吉华路430号江源(坂田)工业区厂房4号101-901、2号101、3号301-501 邮编:518129 t (86-755) 25328888 [sgs.china@sgs.com](mailto:sgs.china@sgs.com)

## Test Report

No.: SZXEC23002810139

Date: Dec 04, 2023

Page 8 of 10

### Attachment:

.031" (0.8 mm)Pitch Wafer/housing/.039" (1.0 mm)Pitch Wafer/housing/  
.047" (1.2 mm) Pitch Wafer/housing/.049" (1.25 mm) Pitch Wafer/housing/  
.050" (1.27 mm) Pitch Wafer/housing/.059" (1.50 mm) Pitch Wafer/housing/  
.070" (1.8 mm) Pitch Wafer/housing/.079" (2.00 mm) Pitch Wafer/housing/  
.085 (2.16mm) Pitch Wafer/housing/.087" (2.20 mm) Pitch Wafer/housing/  
.098" (2.50 mm) Pitch Wafer/housing/.100" (2.54 mm) Pitch Wafer/housing/  
.118" ( 3.00 mm) Pitch Wafer/housing/.138" (3.50 mm) Pitch Wafer/housing/  
.150" ( 3.81 mm) Pitch Wafer/housing/.156" (3.96 mm) Pitch Wafer/housing/  
.157" (4.00 mm) Pitch Wafer/housing/.162" (4.14 mm) Pitch Wafer/housing/  
.165" (4.20 mm) Pitch Wafer/housing/.175"(4.45mm)Pitch Wafer/housing/  
.197" (5.00 mm) Pitch Wafer/housing/.200" (5.08 mm) Pitch Wafer/housing/  
.224" (5.70 mm) Pitch Wafer/housing/.240" (6.10 mm)Pitch Wafer/housing/  
.246" (6.20 mm) Pitch Wafer/housing/.250" (6.35 mm) Pitch Wafer/housing/  
.300" (7.50 mm) Pitch Wafer/housing/.350" (8.90 mm) Pitch Wafer/housing/  
.394" (10.0 mm) Pitch Wafer/housing.031" (0.80 mm)Pitch Female header/  
.039" (1.00 mm)Pitch Female header/.005" (1.27mm)Pitch Female header/  
.079" (2.00mm)Pitch Female header/.100" (2.54mm)Pitch Female header/  
.156" (3.96mm)Pitch Female header/.031" (0.80mm)Pitch Pin header/  
.039" (1.00mm) Pitch Pin header/.049" (1.25mm) Pitch Pin header/  
.005" (1.27mm) Pitch Pin header/.059" (1.50mm) pitch pin header/  
.079" (2.00mm) pitch Pin header/.869" (2.20mm) pitch Pin header/  
.098" (2.50mm) Pitch Pin header/.100" (2.54 mm)Pitch Pin header/  
.137" (3.50mm) Pitch Pin header/.156" (3.96mm) Pitch Pin header/  
.165" (4.2mm) Pitch Pin header/.200" (5.08mm)Pitch Pin header/Press-Fit connectors/  
.039" (1.00mm) Pitch Box Header/.050" (1.27mm)Pitch Box Header/  
.079" (2.00mm)Pitch Box Header/.100" (2.54mm)Pitch Box Header/  
.050" (1.27mm)Pitch Male IDC\DIP Type/.100" (2.54mm)Pitch Male IDC\DIP Type/  
.156" (3.96mm)Pitch Male IDC\DIP Type/.012" (0.30mm)Pitch FFC/FPC/  
.020" (0.50mm)Pitch FFC/FPC/.031" (0.80mm)Pitch FFC/FPC/.039" (1.00mm)Pitch FFC/  
FPC/.049" (1.25mm)Pitch FFC/FPC/.100" (2.54mm)Pitch FFC/FPC/.050" (1.27mm)Pitch FFC/  
FPC/.050" (1.27mm)Pitch FFC/FPC/D-SUB High Current/USB2.0/USB3.0/Mini USB/  
Micro USB/Type-c/SCSI/Telephone/Modular Jack/PLCC/IC Sockets/Fakra/HSD/  
Power Module/DIN 41612 Power/DC Jack/battery connector/POGO Pin/  
High Speed Connector/Hard Metric connector/High voltage connector/  
SIP Sockets and Adapters/PCI EXPRESS/Micro Pitch Board-To-Board/  
Mini Jumper/Medical connector/Terminal Blocks/Sensor/SATA/Waterproof connector/  
PHONE JACK/SMC/AVX/MaxiBridge/MicroBridge/iBridge Ultra/RASTER 5.0MM'  
0801'/0802'/0803'/0804'/0805'/0806'/1001/1002/1003/1004/1005/1006/1007/1008/1009/  
10022/10023/10024/10025/10026/10027/10028/10029/1200/1250/1251/1252/1253/  
1254/1255/1256/1257/1258/1259/12500/12501/12502/12503/12504/12505/12506/  
12507/12508/12509/12510/12511/12512/12513/12514/12515/12516/12517/12518/  
12519/12520/12521/12522/12580/1500/1501/1502/1503/1504/1505/1506/1507/1508/  
1509/15000/15001/15002/15003/15004/15005/15006/15007/15008/15009/2011/2012/  
2013/2014/2015/2016/2017/2018/2019/2020/2021/2022/2023/2024/2025/2051/2062/  
20002/20003/20004/20005/20006/20007/20008/20009/20010/20011/20012/20013/  
20014/20015/20016/20017/20018/20019/20020/20021/20022/20042/20062/20150/  
20200/20230/2200/2201/2202/2203/2204/2205/22020/22011/22010/22002/22003/  
22004/22005/22012/22013/22014/2501/2502/2503/2504/2505/2506/2507/2508/2509/  
2510/2511/2512/2513/2514/2515/2516/2517/2518/2519/2581/25000/25001/25002/  
25003/25004/25005/25006/25007/25008/25009/25010/25011/25012/25013/25014/  
25015/25016/25017/25018/25019/25080/25083/25120/25370/2540/2541/2542/2543/



SGS-CSTC Shenzhen Technical Services Co., Ltd.  
Shenzhen Branch Testing Center-Chemical Laboratory

Unless otherwise agreed in writing, this document is issued by the Company subject to its General Conditions of Service printed overleaf, available on request or accessible at <http://www.sgs.com/en/Terms-and-Conditions.aspx> and, for electronic format documents, subject to Terms and Conditions for Electronic Documents at <http://www.sgs.com/en/Terms-and-Conditions/Terms-e-Documents.aspx>. Attention is drawn to the limitation of liability, indemnification and jurisdiction issues defined therein. Any holder of this document is advised that information contained hereon reflects the Company's findings at the time of its intervention only and within the limits of Client's instructions, if any. The Company's sole responsibility is to its Client and this document does not exonerate parties to a transaction from exercising all their rights and obligations under the transaction documents. This document cannot be reproduced except in full, without prior written approval of the Company. Any unauthorized alteration, forgery or falsification of the content or appearance of this document is unlawful and offenders may be prosecuted to the fullest extent of the law. Unless otherwise stated the results shown in this test report refer only to the sample(s) tested.

Attention: To check the authenticity of testing/inspection report & certificate, please contact us at telephone: (86-755) 8307 1443, or email: [CN.Doccheck@sgs.com](mailto:CN.Doccheck@sgs.com)

Room 101-901, Plant 4 & Room 101, Plant 2 & Room 101, Plant 3 & Room 301-501, Plant 3, Jianghao (Banian) Industrial Plant Area, No. 430, Jihua Road, Banian Community, Banian Street, Longgang District, Shenzhen, Guangdong, China 518129 [www.sgs.com](http://www.sgs.com)  
中国·广东·深圳市龙岗区坂田街道坂田社区吉华路430号江灏(坂田)工业厂区厂房4号101-901、2号101、3号101、3号301-501 邮编:518129 t(86-755) 25328888 [sgs.china@sgs.com](mailto:sgs.china@sgs.com)



## Test Report

No.: SZXEC23002810139

Date: Dec 04, 2023

Page 9 of 10

2544/2545/2546/2547/2548/2549/25401/25402/25403/25404/25405/25406/25407/  
25408/25409/25410/25411/25412/25413/25414/25415/25416/25417/25418/25419/  
25430/25450/25480/3001/3002/3003/3004/3005/3006/3007/3008/3009/30001/30002/  
30003/30004/30005/30006/30007/30008/30009/3500/3501/3502/3503/3504/3505/3506/  
3507/3508/3509/35000/35001/35002/35003/35004/35005/35006/35007/35008/35009/  
35012/35060/3810/3960/3961/3962/3963/3964/3965/3966/3967/3968/3969/3969/39601/  
39602/39603/39604/39605/39606/39607/39608/39609/39610/39611/39612/39613/39614/  
39615/39616/39617/39618/39619/39620/4001/4002/4003/4004/4005/4006/4007/4008/  
4009/40350/41400/41411/41422/41433/41455/4201/4202/4203/4204/4205/42021/42022/  
42023/42024/42025/445001/5001/5002/5003/5004/5005/50000/50010/50011/50012/  
50013/50014/50015/5081/5082/5083/5084/5085/50801/50802/50803/50804/50805/  
5701/5702/5703/5704/5705/57001/57002/57003/57004/57005/6100/6101/6102/6201/  
6202/6203/6204/6351/6352/6353/6354/6355/7501/7502/7503/7504/7505/8901/8902/  
8903/8904/8905/10001/10002/10003/10004/10005/A2537R/25491M



Unless otherwise agreed in writing, this document is issued by the Company subject to its General Conditions of Service printed overleaf, available on request or accessible at <http://www.sgs.com/en/Terms-and-Conditions.aspx> and, for electronic format documents, subject to Terms and Conditions for Electronic Documents at <http://www.sgs.com/en/Terms-and-Conditions/Terms-e-Documents.aspx>. Attention is drawn to the limitation of liability, indemnification and jurisdiction issues defined therein. Any holder of this document is advised that information contained hereon reflects the Company's findings at the time of its intervention only and within the limits of Client's instructions, if any. The Company's sole responsibility is to its Client and this document does not exonerate parties to a transaction from exercising all their rights and obligations under the transaction documents. This document cannot be reproduced except in full, without prior written approval of the Company. Any unauthorized alteration, forgery or falsification of the content or appearance of this document is unlawful and offenders may be prosecuted to the fullest extent of the law. Unless otherwise stated the results shown in this test report refer only to the sample(s) tested.

Attention: To check the authenticity of testing /inspection report & certificate, please contact us at telephone: (86-755) 8307 1443, or email: [CN.Doccheck@sgs.com](mailto:CN.Doccheck@sgs.com)

SGS-CSTC Standards Technical Services Co., Ltd.  
Shenzhen Branch Testing Center Chemical Laboratory

Room 101-901, Plant 4 & Room 101, Plant 2 & Room 101, Plant 3 & Room 301-501, Plant 3, Jianghao (Banian) Industrial Plant Area, No. 430, Jihua Road, Banian Community, Banian Street, Longgang District, Shenzhen, Guangdong, China 518129 [www.sgs.com](http://www.sgs.com)  
中国·广东·深圳市龙岗区坂田街道坂田社区吉华路430号江源(坂田)工业厂区厂房4号101-901、2号101、3号301-501 邮编:518129 t:(86-755) 25328888 [sgs.china@sgs.com](mailto:sgs.china@sgs.com)

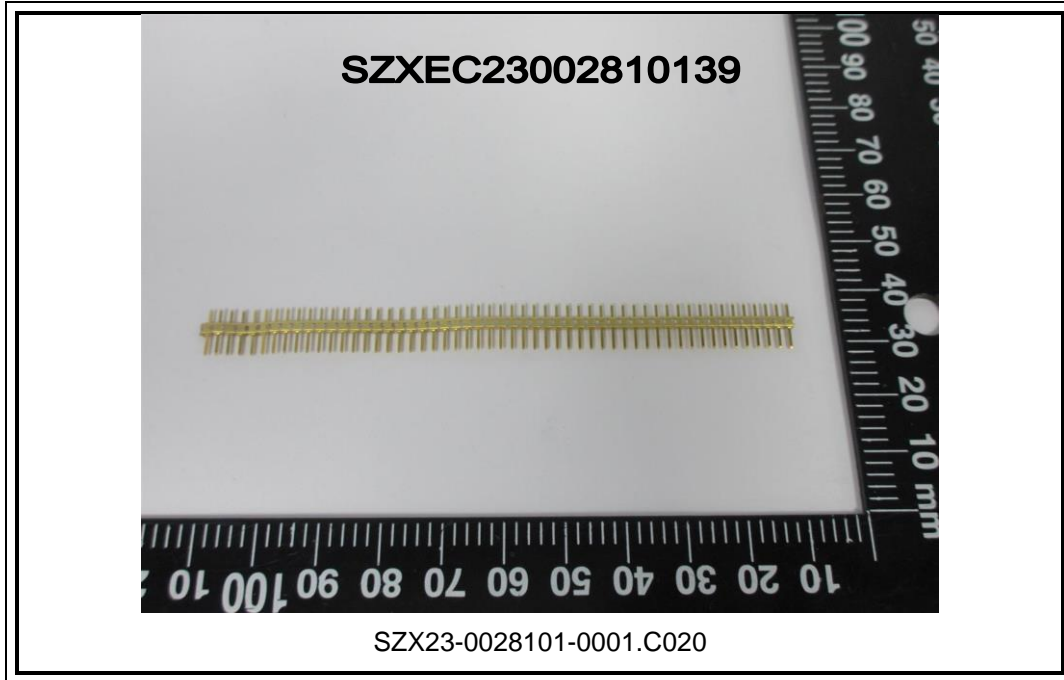
## Test Report

No.: SZXEC23002810139

Date: Dec 04, 2023

Page 10 of 10

Sample Photo:



SGS authenticate the photo on original report only  
\*\*\* End of Report \*\*\*



Unless otherwise agreed in writing, this document is issued by the Company subject to its General Conditions of Service printed overleaf, available on request or accessible at <http://www.sgs.com/en/Terms-and-Conditions.aspx> and, for electronic format documents, subject to Terms and Conditions for Electronic Documents at <http://www.sgs.com/en/Terms-and-Conditions/Terms-e-Documents.aspx>. Attention is drawn to the limitation of liability, indemnification and jurisdiction issues defined therein. Any holder of this document is advised that information contained hereon reflects the Company's findings at the time of its intervention only and within the limits of Client's instructions, if any. The Company's sole responsibility is to its Client and this document does not exonerate parties to a transaction from exercising all their rights and obligations under the transaction documents. This document cannot be reproduced except in full, without prior written approval of the Company. Any unauthorized alteration, forgery or falsification of the content or appearance of this document is unlawful and offenders may be prosecuted to the fullest extent of the law. Unless otherwise stated the results shown in this test report refer only to the sample(s) tested.

Attention: To check the authenticity of testing /inspection report & certificate, please contact us at telephone: (86-755) 8307 1443, or email: [CN.Doccheck@sgs.com](mailto:CN.Doccheck@sgs.com)

SGS-CSTC Standards Technical Services Co., Ltd.  
Shenzhen Branch Testing Center Chemical Laboratory

Room 101-901, Plant 4 & Room 101, Plant 2 & Room 101, Plant 3 & Room 301-501, Plant 3, Jianghao (Banian) Industrial Plant Area, No. 430, Jihua Road, Banian Community, Banian Street, Longgang District, Shenzhen, Guangdong, China 518129 [www.sgs.com](http://www.sgs.com)  
中国·广东·深圳市龙岗区坂田街道坂田社区吉华路430号江灏(坂田)工业厂区厂房4号101-901、2号101、3号301-501 邮编:518129 t:(86-755) 25328888 [sgs.china@sgs.com](mailto:sgs.china@sgs.com)