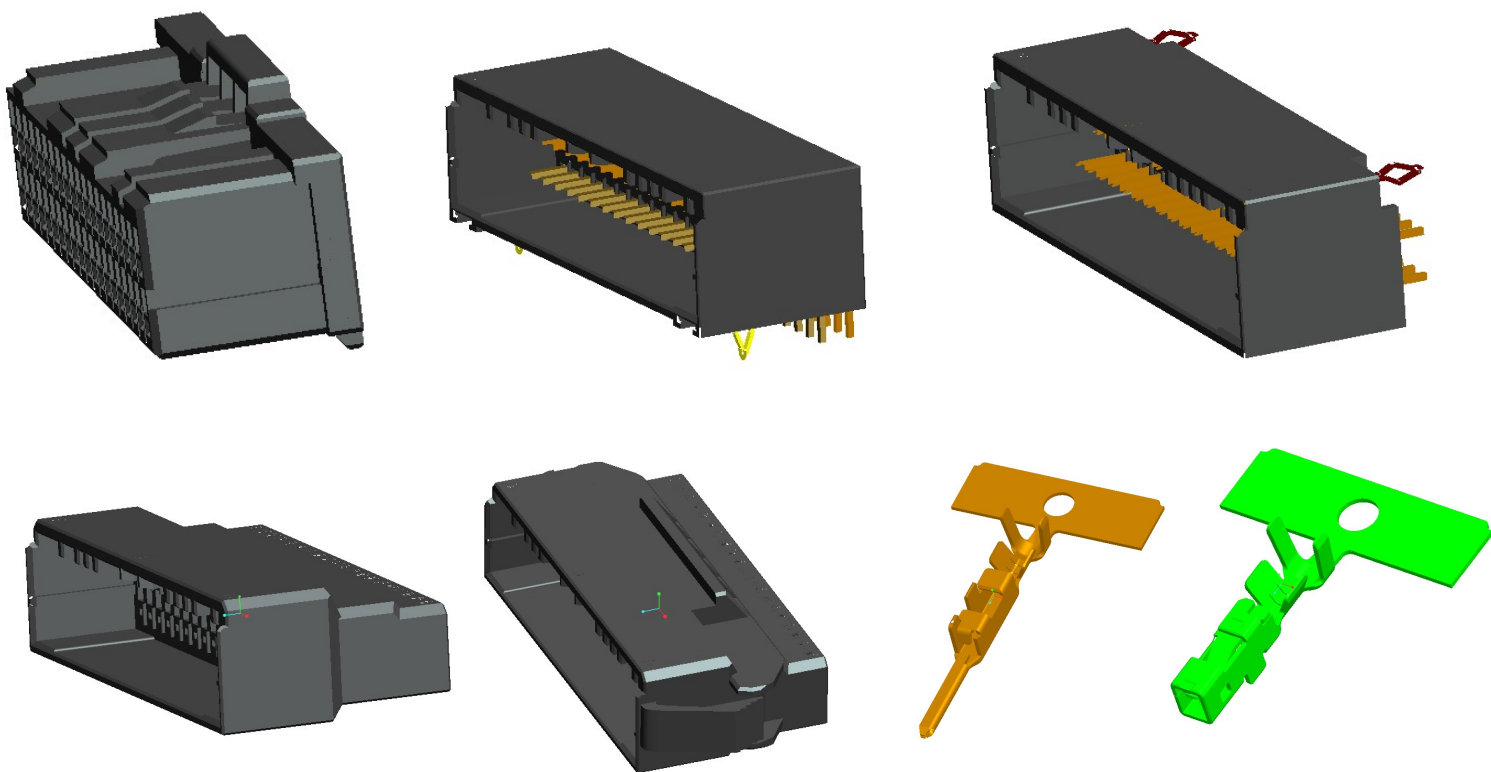


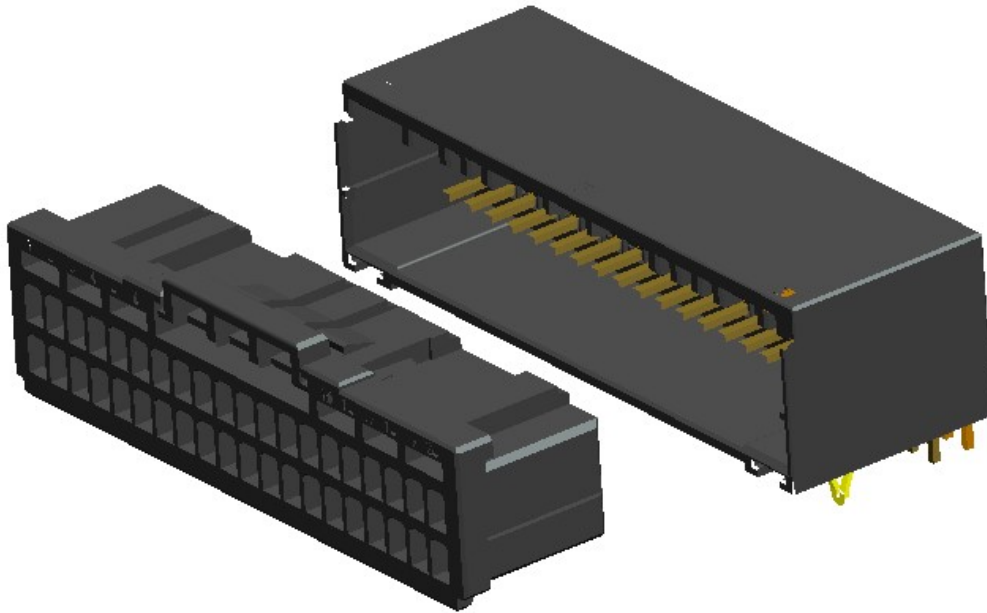
**HJBRIGHT<sup>®</sup>**

## **Compact Industrial Connectors with 0.50mm Size Terminal**

### **2.0mm Connectors**



**HJBRIGHT<sup>®</sup>**



## **Professional connector and wiring harness manufacturer**

东莞市华晶电子有限公司

地址:广东省东莞市常平镇黄泥塘禾石路1号3栋

DDR:Building 3, No. 1 Heshi Road, Huangnitang, Changping Town, Dongguan, Guangdong  
BRIGHT-E ELECTRONIC TECHNOLOGY LIMITED

DDR:Rm. 1105, Lippo Centre Tower 1, 89 Queensway, Admiralty, Hong Kong.

地址: 香港金钟道89号力宝中心第一座11楼1105室

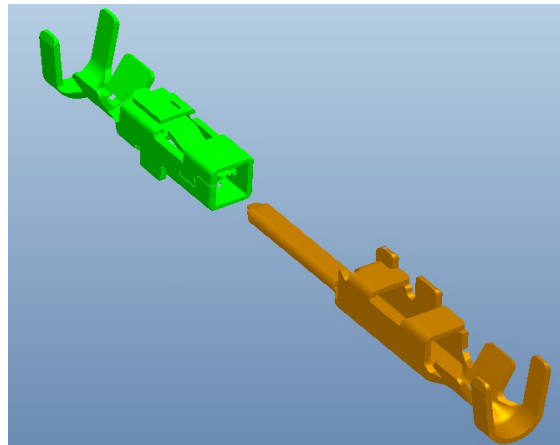
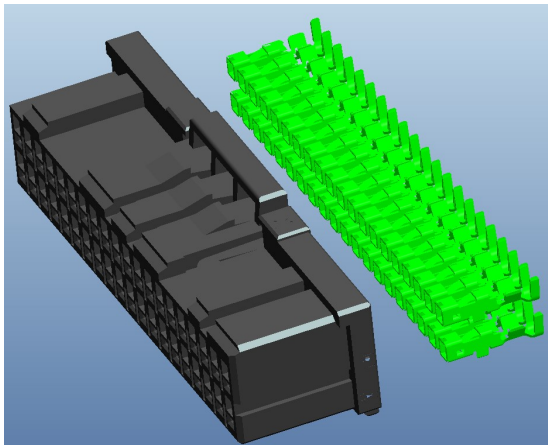
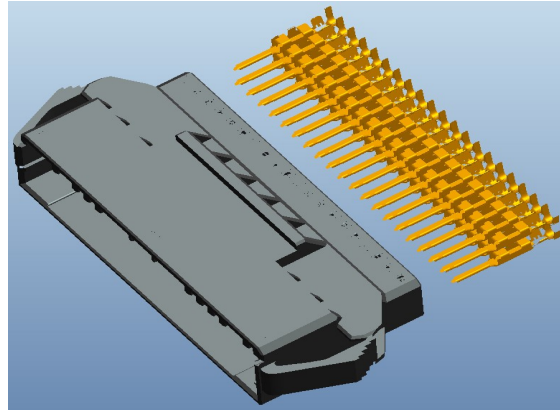
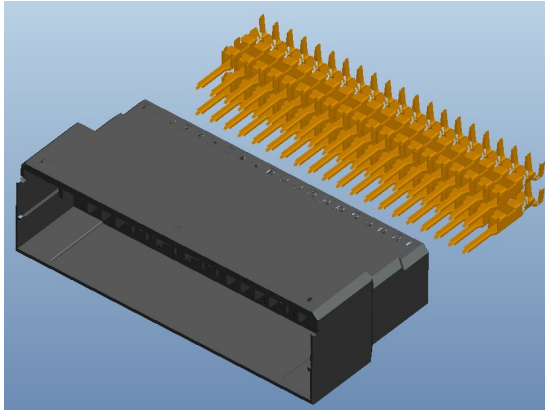
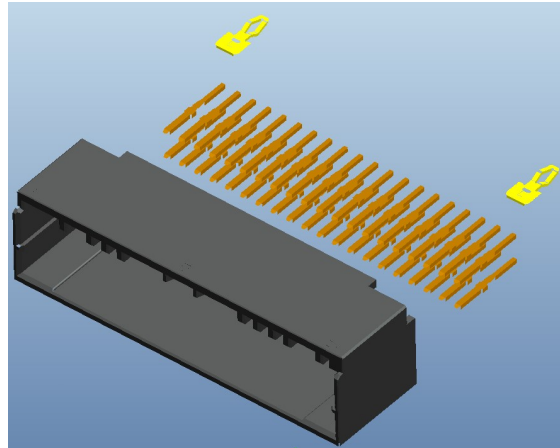
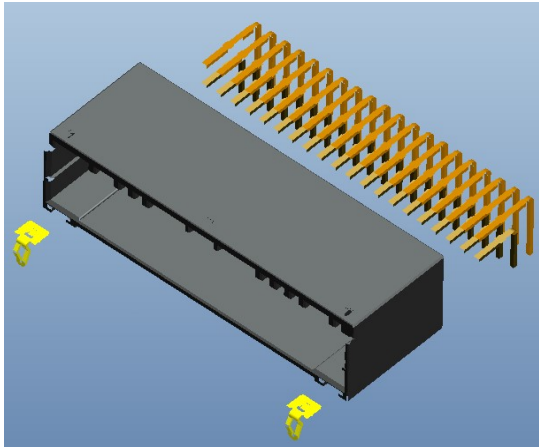
E-mail:billy@hjbright.com

PHONE:18819764786

TEL:0769-81089582

FAX:0769-81089581

# HJBRIGHT®



东莞市华晶电子有限公司

地址:广东省东莞市常平镇黄泥塘禾石路1号3栋

DDR:Building 3, No. 1 Heshi Road, Huangnitang, Changping Town, Dongguan, Guangdong

BRIGHT-E ELECTRONIC TECHNOLOGY LIMITED

DDR:Rm. 1105, Lippo Centre Tower 1, 89 Queensway, Admiralty, Hong Kong.

地址: 香港金钟道89号力宝中心第一座11楼1105室

E-mail:billy@hjbright.com

PHONE:18819764786

TEL:0769-81089582

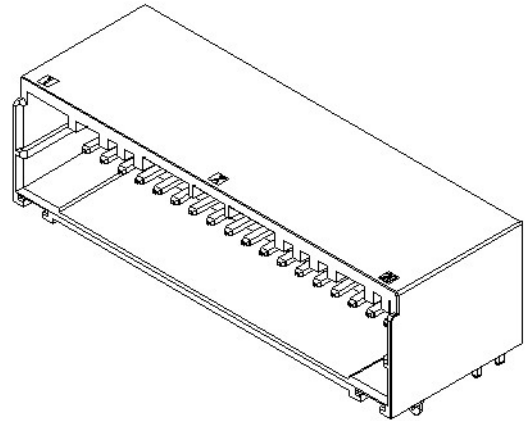
FAX:0769-81089581

**2.00mm Pitch Wafer Double Row R/A**

Specifications:  
 Material And Finish:  
 Insulator: PA6T UL94V-0  
 Contact: Copper alloy  
 Plated: See Ordering Information

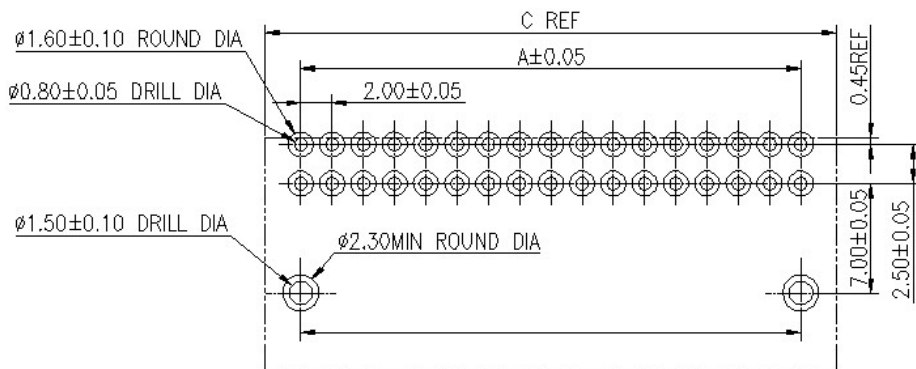
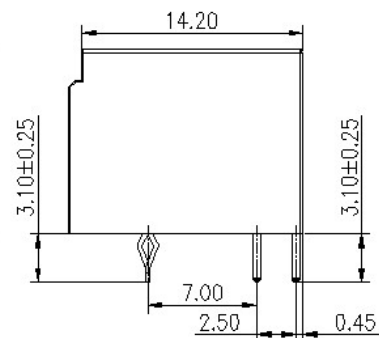
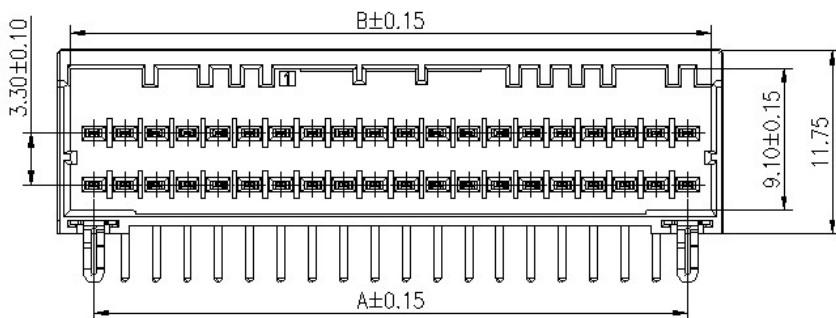
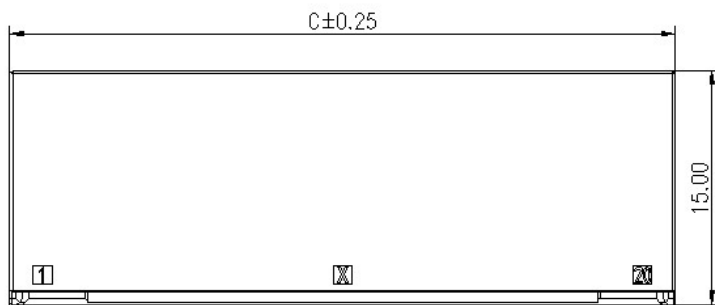
Rating:  
 Current Rating: 3.0 Amp (Power)  
 Voltage Rating: 125V AC/DC  
 Operating Temperature Range: -55° ~ +105°C

Electrical:  
 Contact resistance: 20m Ohm Max  
 Insulator resistance: 1000M ohm min.  
 Withstanding Voltage: 1000V AC/Minute



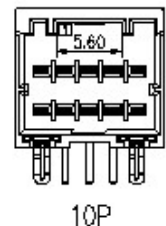
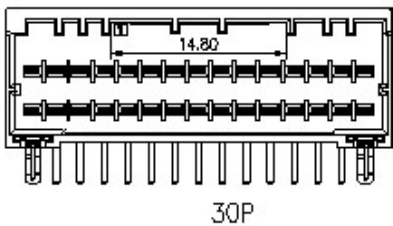
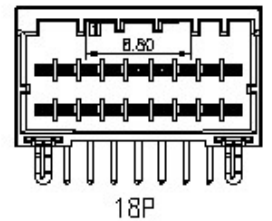
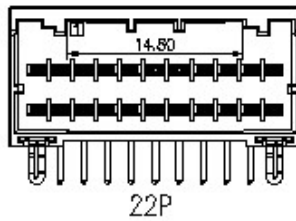
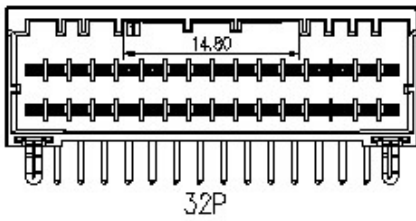
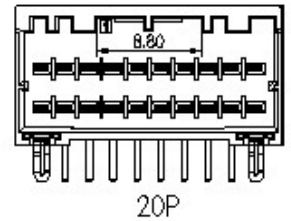
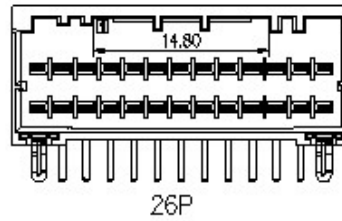
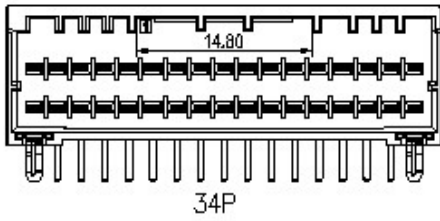
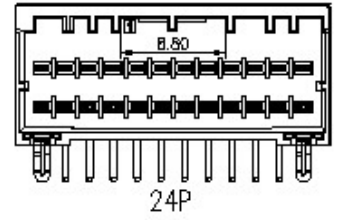
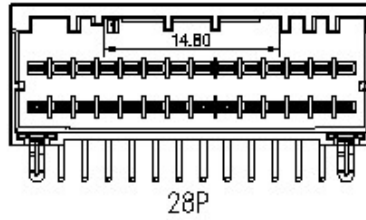
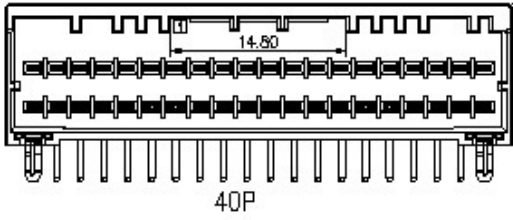
Ordering Information  
 A20200R-XXX-01-C  
 1 2 3 4 5

- 1: — Series No.
- 2: — R:R/A Type
- 3: — No. of Positions
- 4: — A: Gold Flash  
 H: Selective Gold Flash  
 S: Matte Tin Plated  
 T: 10u" Gold on contact; Tin on tail  
 M: 15u" Gold on contact; Tin on tail  
 Q: Tin Plated
- 5: — C: In Tray



Recommend PCB LAYOUT (TOP VIEW)  
 Tolerance: ±0.05mm

## 2.00mm Pitch Wafer Double Row R/A



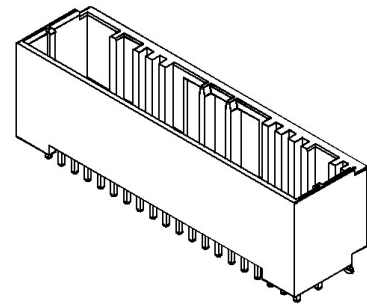
Circuit No.	Dimensions		
	A	B	C
10P	8.00	11.00	12.60
18P	16.00	19.00	20.60
20P	18.00	21.00	22.60
22P	20.00	23.00	24.60
24P	22.00	25.00	26.60
26P	24.00	27.00	28.60
28P	26.00	29.00	30.60
30P	28.00	31.00	32.60
32P	30.00	33.00	34.60
34P	32.00	35.00	36.60
40P	38.00	41.00	42.60

## 2.00mm Pitch Wafer Double Row Vertical

Specifications:  
 Material And Finish:  
 Insulator: PA6T UL94V-0  
 Contact: Copper alloy  
 Plated: See Ordering Information

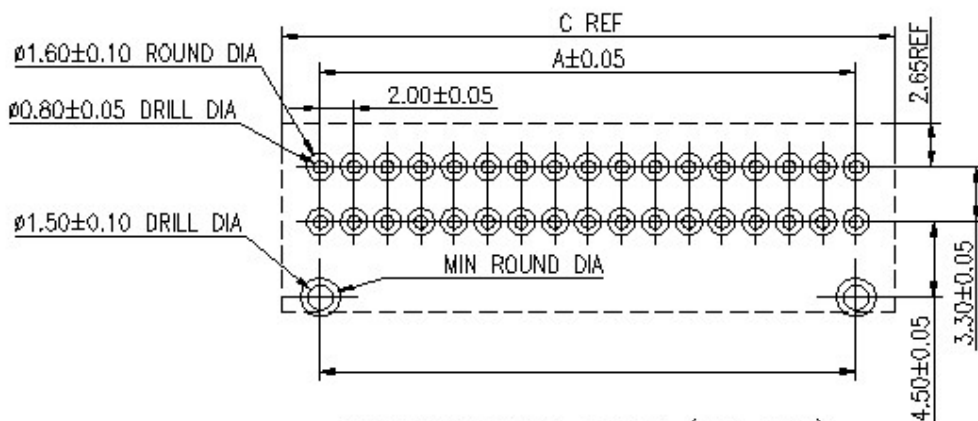
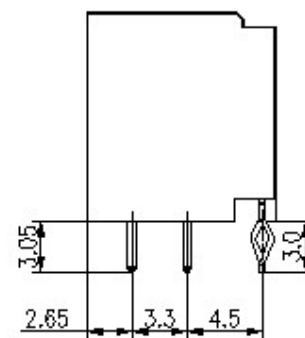
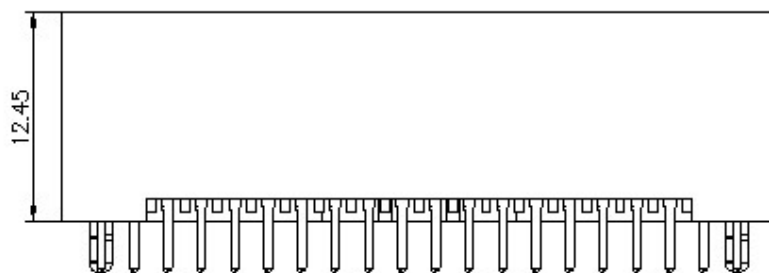
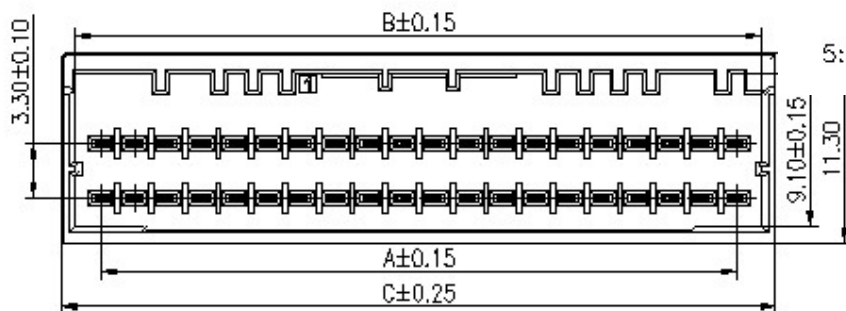
Rating:  
 Current Rating: 3.0 Amp (Power)  
 Voltage Rating: 125V AC/DC  
 Operating Temperature Range: -55°C ~ +105°C

Electrical:  
 Contact resistance: 20m Ohm Max  
 Insulator resistance: 1000M ohm min.  
 Withstanding Voltage: 1000V AC/Minute



Ordering Information  
**A20200S-XXX-01-C**

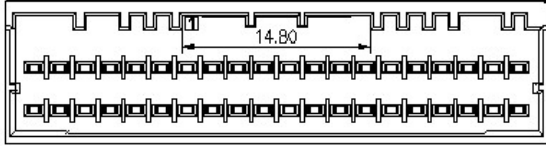
- 1: — Series No.
- 2: — S: Straight Type
- 3: — No. of Positions
- 4: — A: Gold Flash  
 H: Selective Gold Flash  
 S: Matte Tin Plated  
 T: 10u" Gold on contact; Tin on tail  
 M: 15u" Gold on contact; Tin on tail  
 Q: Tin Plated
- 5: — C: In Tray



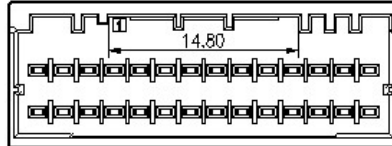
Recommend PCB LAYOUT (TOP VIEW)

Tolerance: ±0.05mm

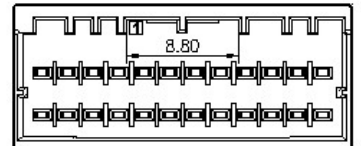
## 2.00mm Pitch Wafer Double Row Vertical



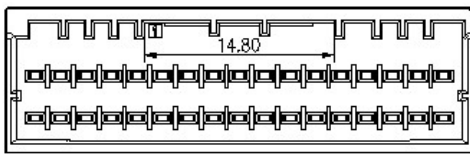
40P



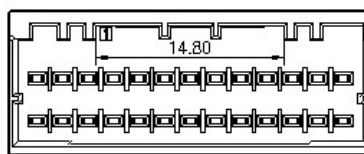
28P



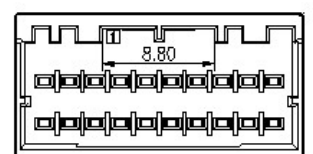
24P



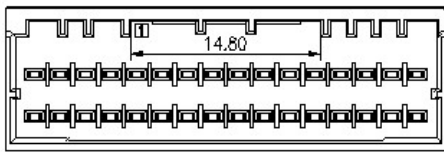
34P



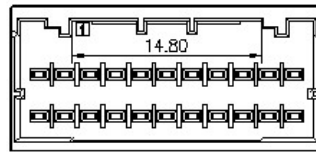
26P



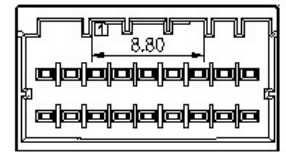
20P



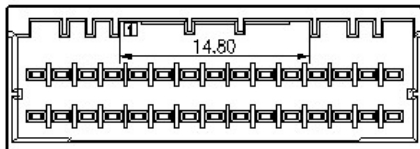
32P



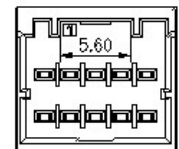
22P



18P



30P



10P

Circuit No.	Dimensions		
	A	B	C
10P	8.00	11.00	12.60
18P	16.00	19.00	20.60
20P	18.00	21.00	22.60
22P	20.00	23.00	24.60
24P	22.00	25.00	26.60
26P	24.00	27.00	28.60
28P	26.00	29.00	30.60
30P	28.00	31.00	32.60
32P	30.00	33.00	34.60
34P	32.00	35.00	36.60
40P	38.00	41.00	42.60

## 2.00mm Pitch Wafer Double Row Housing

Specifications:

Material And Finish:

Insulator:PBT UL94V-0

Color:Black

Rating:

Current Rating:3.0 Amp(20AWG)

Voltage Rating:125V AC/DC

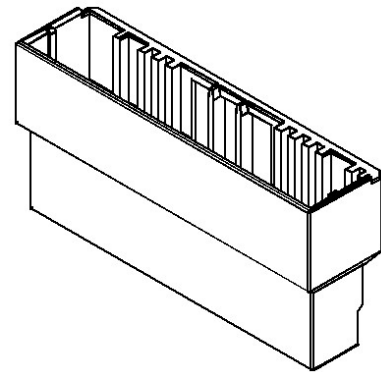
Operating Temperature Range:-55~+105°C

Electrical:

Contact resistance:20m Ohm Max

Insulator resistance:1000M ohm min.

Withstanding Voltage:1000V AC/Minute



Ordering Information

H20200F-XXP-01-BA

1 2 3 4 5

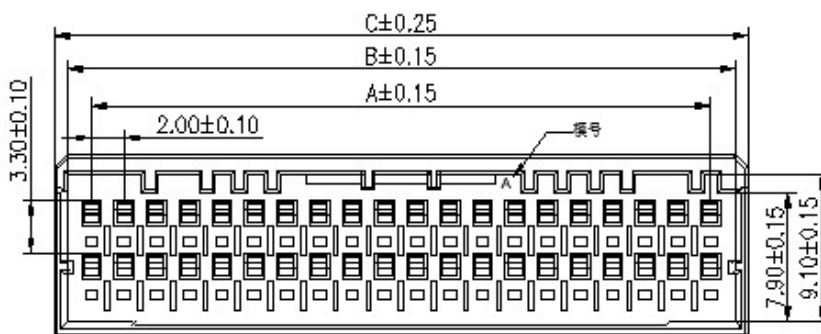
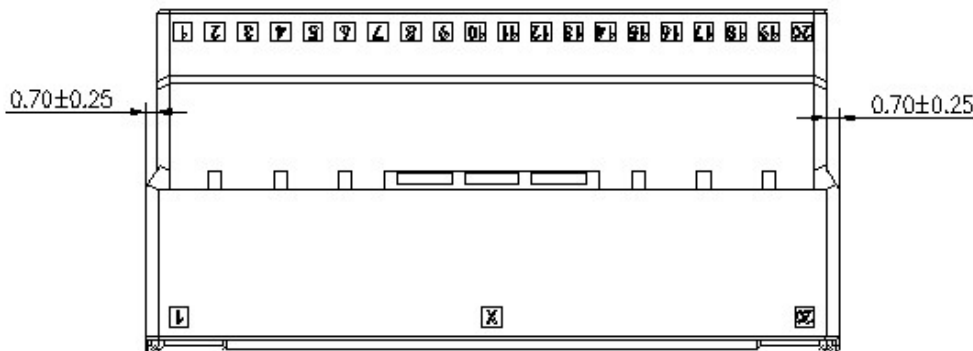
1: — Series No.

2: — F:Female Housing

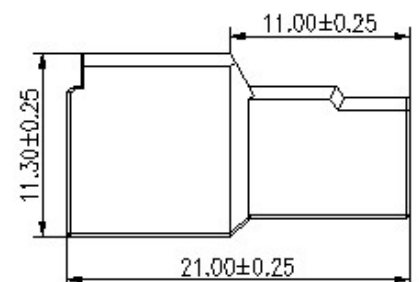
3: — No. of Positions

4: — B:Black

5: — A:In Bag

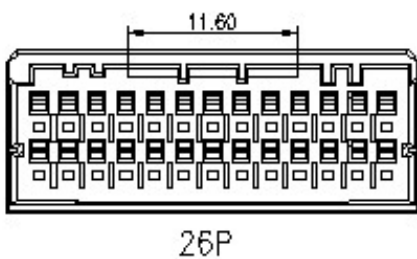
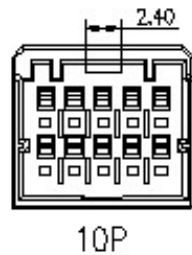
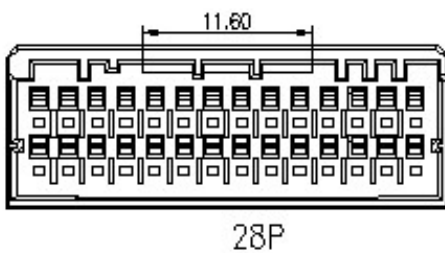
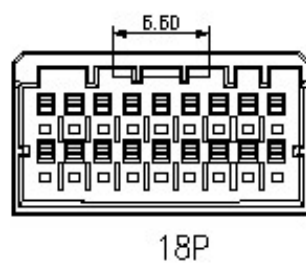
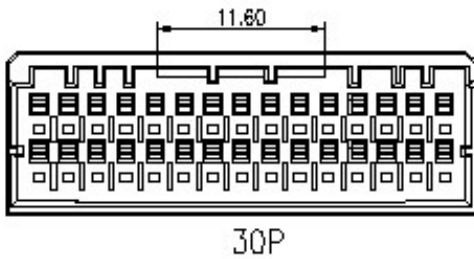
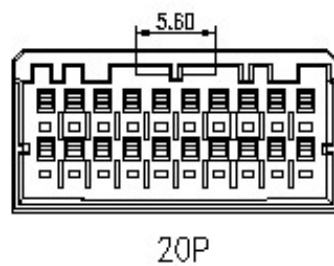
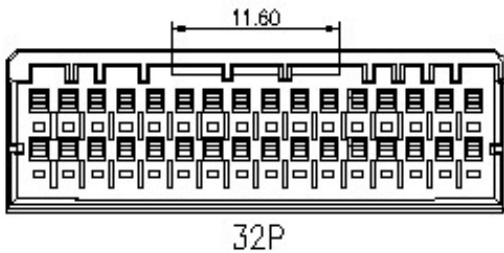
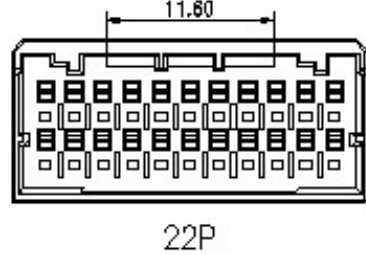
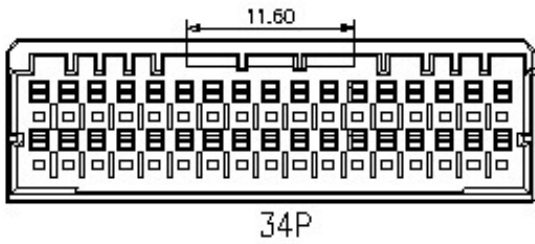
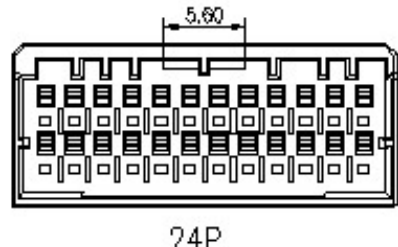
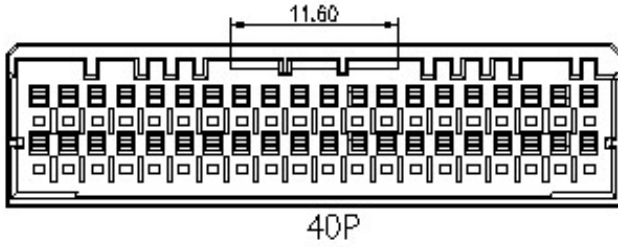


Circuit No.	Dimensions		
	A	B	C
10P	8.00	11.00	12.60
18P	16.00	19.00	20.60
20P	18.00	21.00	22.60
22P	20.00	23.00	24.60
24P	22.00	25.00	26.60
26P	24.00	27.00	28.60
28P	26.00	29.00	30.60
30P	28.00	31.00	32.60
32P	30.00	33.00	34.60
34P	32.00	35.00	36.60
40P	38.00	41.00	42.60





## 2.00mm Pitch Wafer Double Row Housing

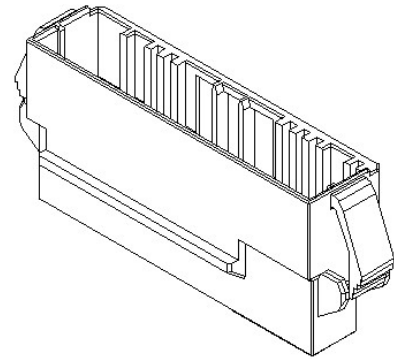


## 2.00mm Pitch Wafer Double Row Housing

Specifications:  
 Material And Finish:  
 Insulator:PBT UL94V-0  
 Color:Black

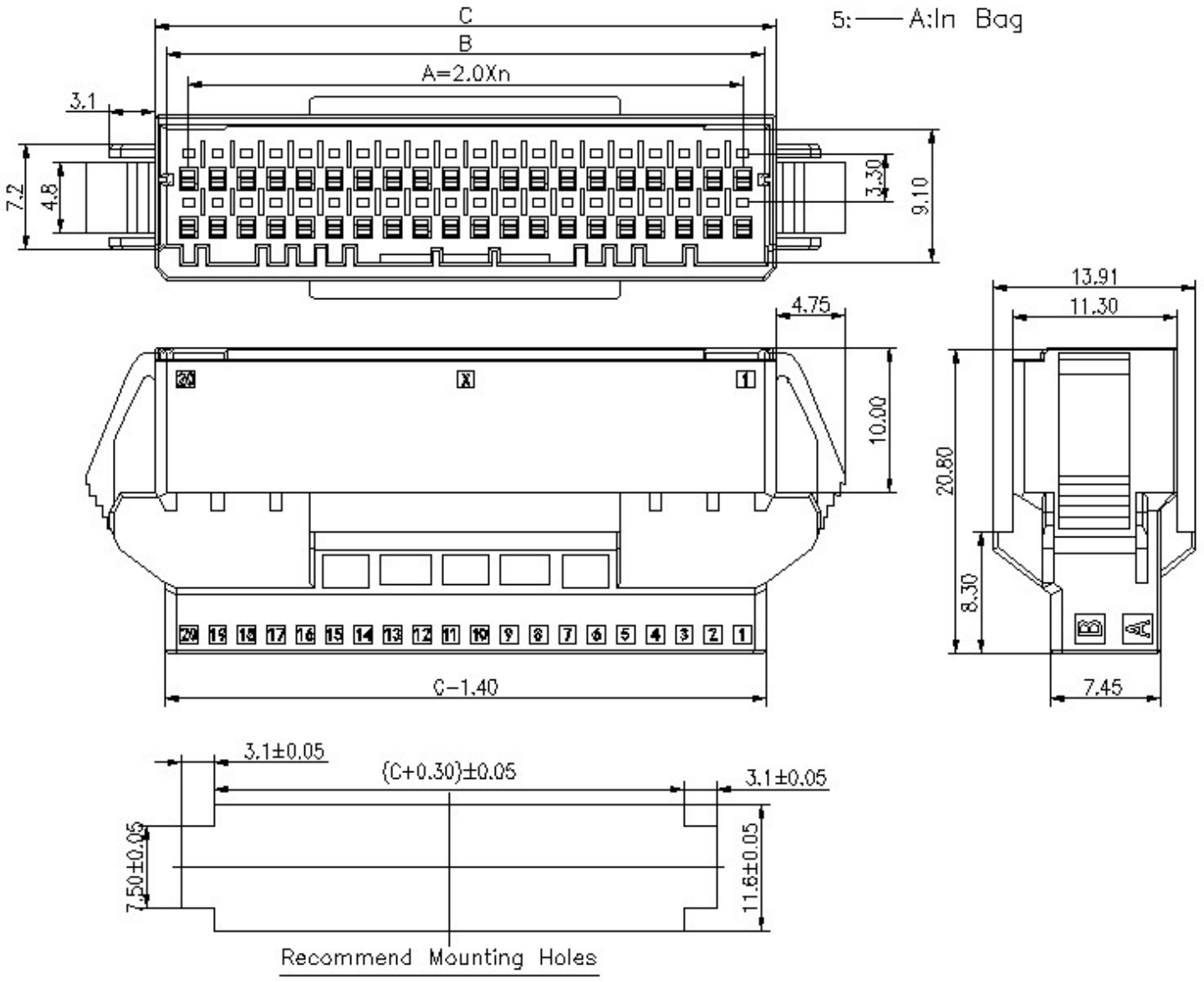
Rating:  
 Current Rating:3.0 Amp(20AWG)  
 Voltage Rating:125V AC/DC  
 Operating Temperature Range:-55~+105°C

Electrical:  
 Contact resistance:20m Ohm Max  
 Insulator resistance:1000M ohm min.  
 Withstanding Voltage:1000V AC/Minute



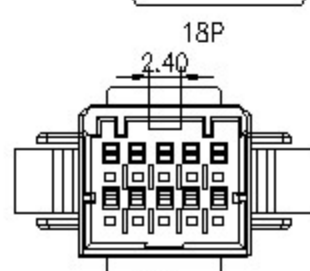
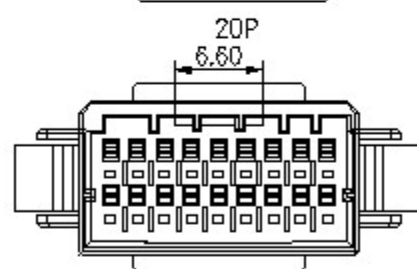
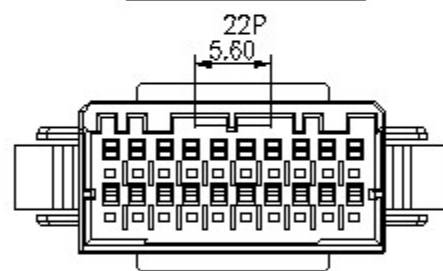
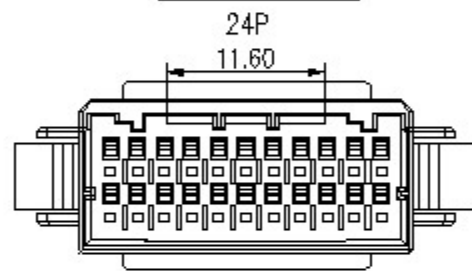
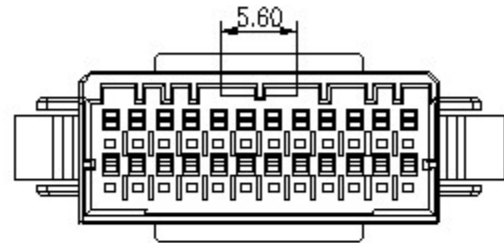
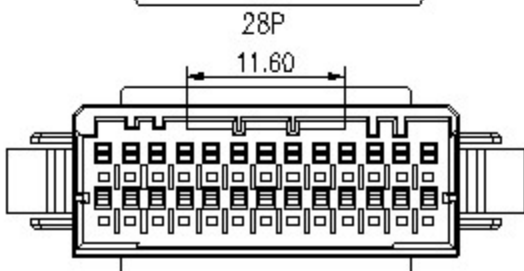
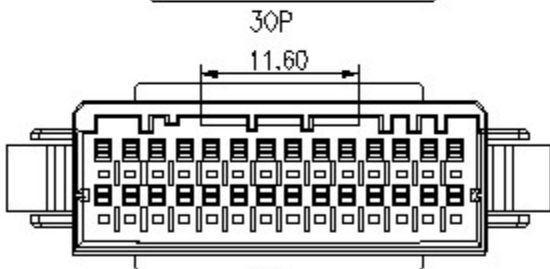
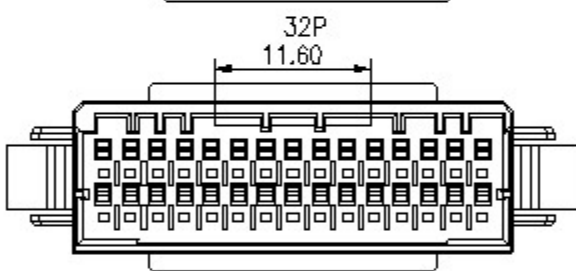
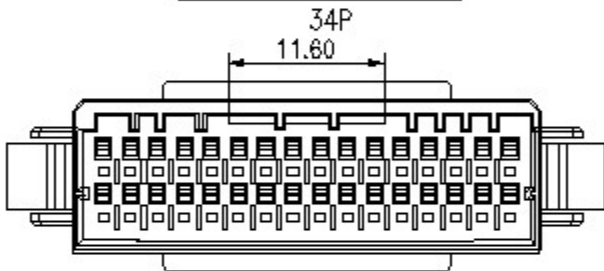
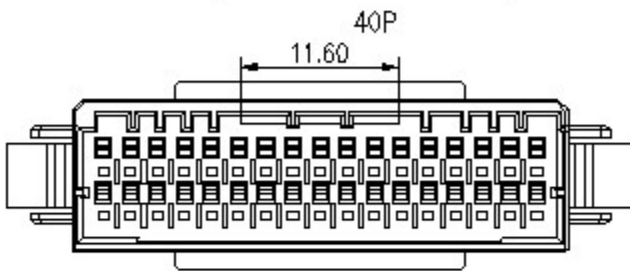
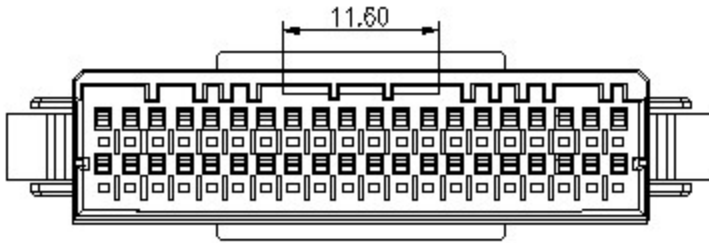
Ordering Information  
**H20200F-XXP-02-BA**  
 1 2 3 4 5

- 1: — Series No.
- 2: — F:Female Housing
- 3: — No. of Positions
- 4: — B:Black
- 5: — A:In Bag



**2.00mm Pitch Wafer Double Row Housing**

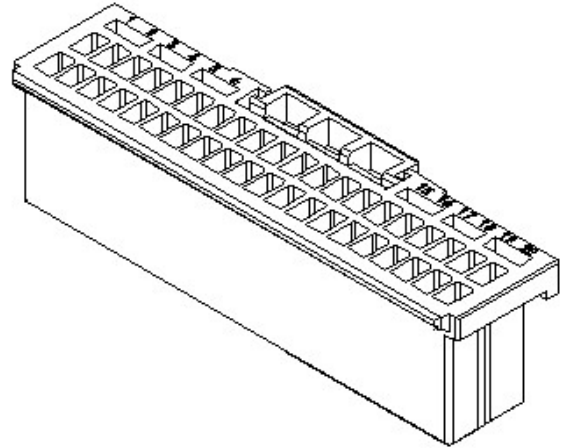
Circuit No.	Dimensions		
	A	B	C
10P	8.00	11.00	12.60
18P	16.00	19.00	20.60
20P	18.00	21.00	22.60
22P	20.00	23.00	24.60
24P	22.00	25.00	26.60
26P	24.00	27.00	28.60
28P	26.00	29.00	30.60
30P	28.00	31.00	32.60
32P	30.00	33.00	34.60
34P	32.00	35.00	36.60
40P	38.00	41.00	42.60



## 2.00mm Pitch Housing Double Row

Specifications:  
 Material And Finish:  
 Insulator:PBT UL94V-0 Color:Black  
 Contact:Brass

Rating:  
 Current Rating:3.0 Amp(20AWG)  
 Voltage Rating:125V AC/DC  
 Operating Temperature Range:  
 Electrical:  
 Contact Resistance:20mΩ Max  
 Insulation Resistance:1000MΩ Min  
 Withstanding Voltage:1000V AC/Minute



### Ordering Information

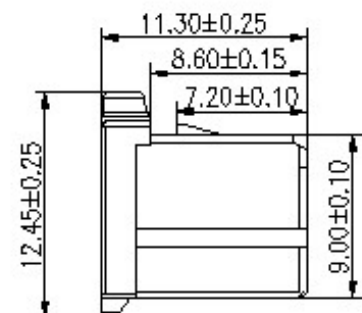
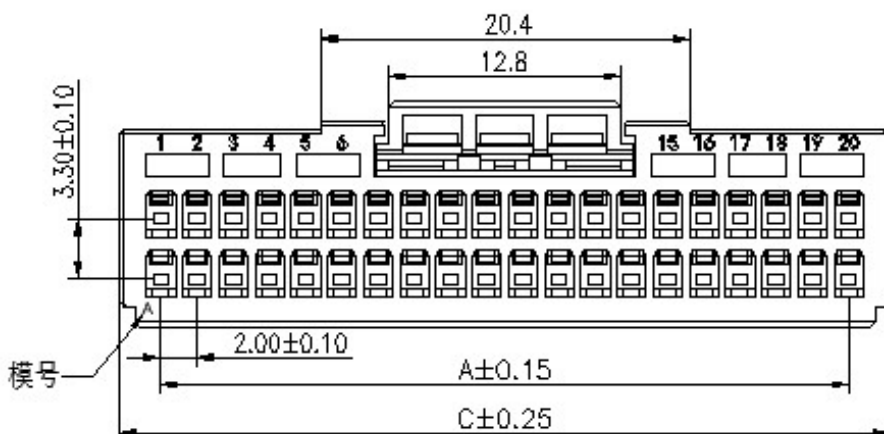
H20200M-XXP-A

1 2 3 4

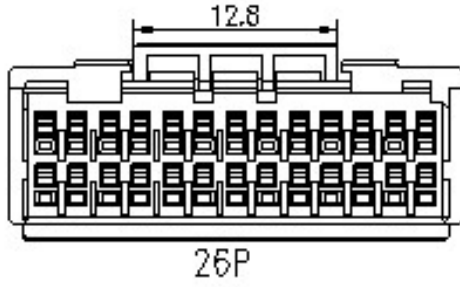
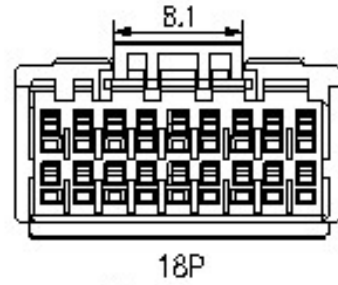
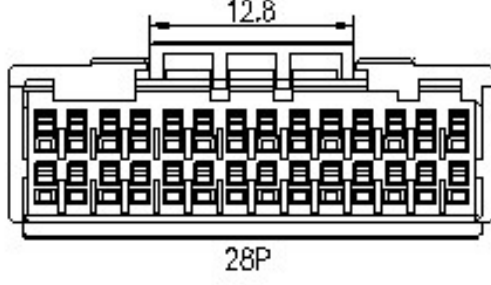
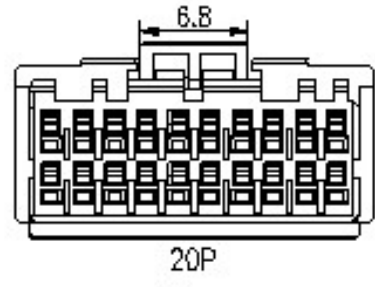
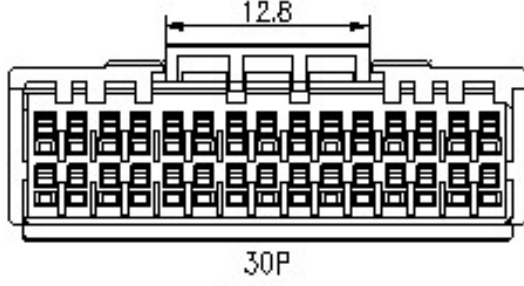
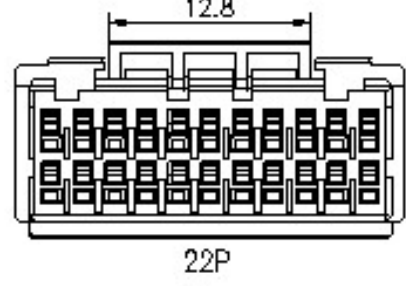
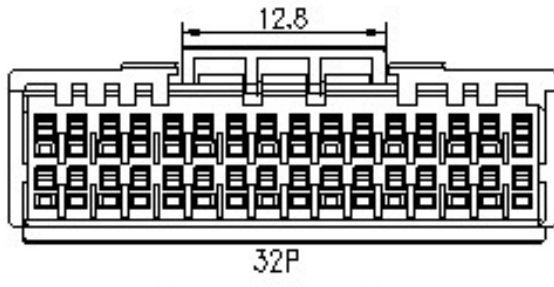
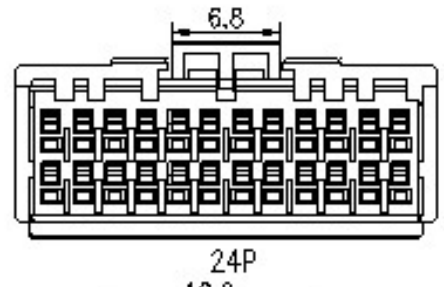
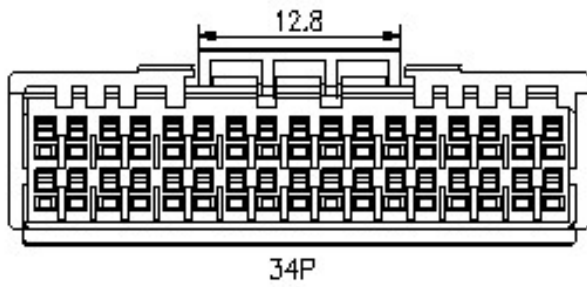
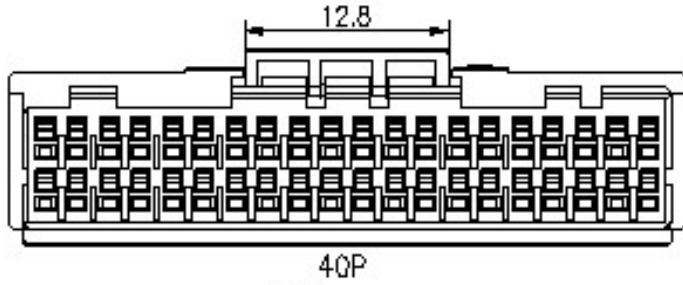
- 1: — Series No.
- 2: — M:Male Housing
- 3: — No. of Positions
- 4: — A:In Pag



Circuit No.	Dimensions		
	A	B	C
10P	8.00	10.90	12.60
18P	16.00	18.90	20.60
20P	18.00	20.90	22.60
22P	20.00	22.90	24.60
24P	22.00	24.90	26.60
26P	24.00	26.90	28.60
28P	26.00	28.90	30.60
30P	28.00	30.90	32.60
32P	30.00	32.90	34.60
34P	32.00	34.90	36.60
40P	38.00	40.90	42.60



## 2.00mm Pitch Housing Double Row

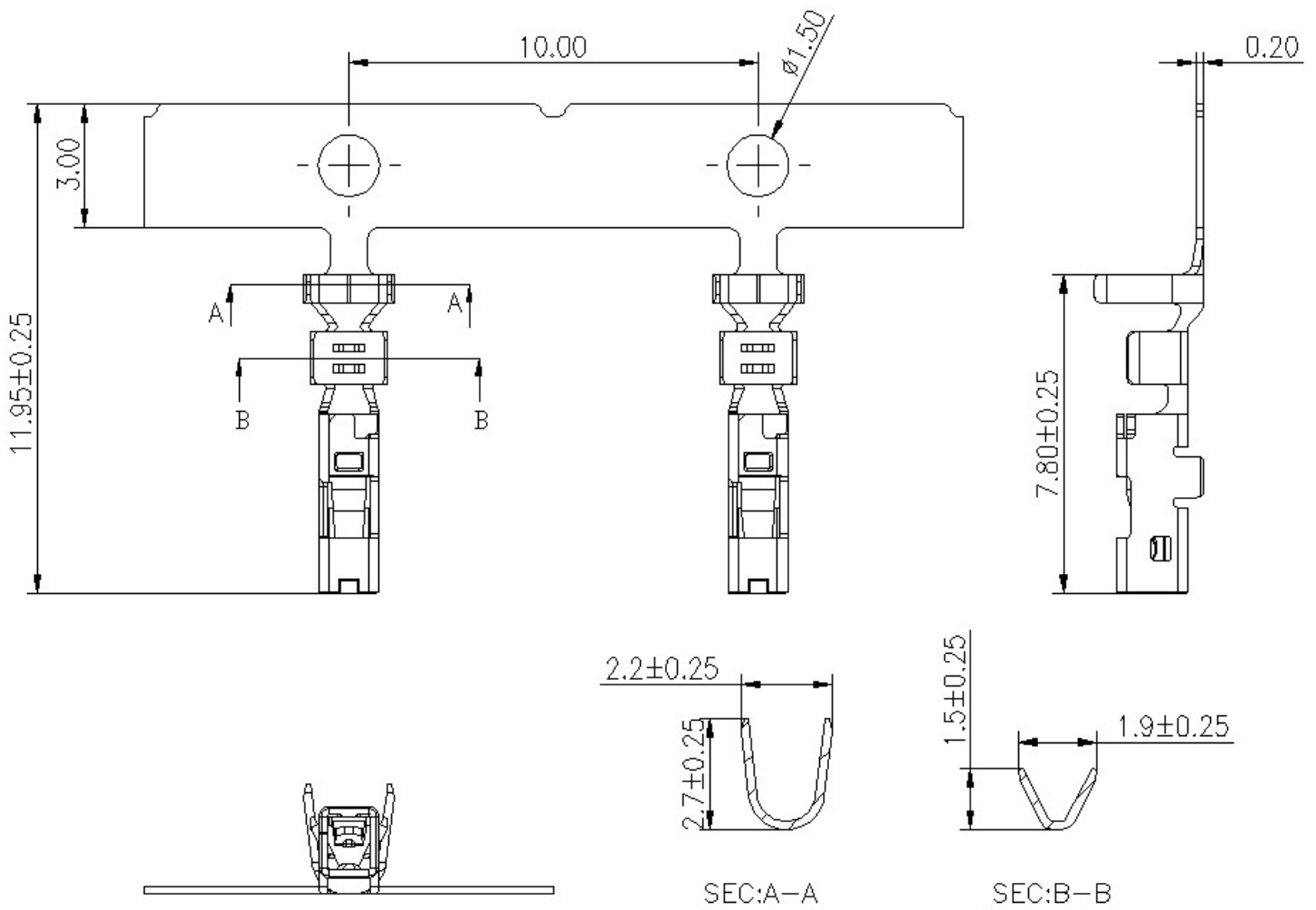
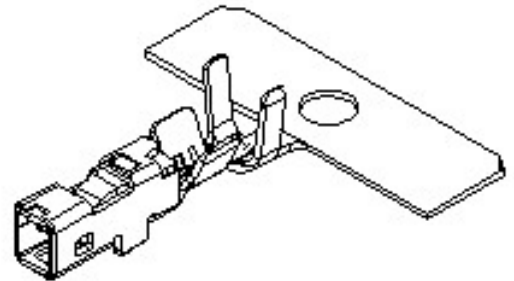


## 2.0mm Pitch Female Terminal

Specifications:  
 Material: Copper alloy  
 Wire Range: AWG#22~28  
 Operating Temperature Range: -55°~+150°C

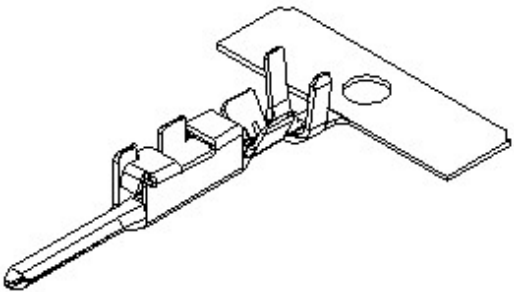
Ordering Information  
H20200TF-GX  
 1 2 3

- 1: — Series No.
- 2: — TF: Female Terminal
- 3: — Q: Tin Plated  
 M: 15u" Gold on contact



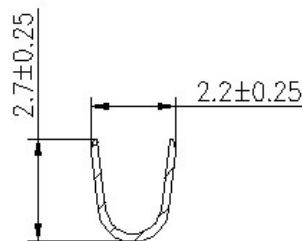
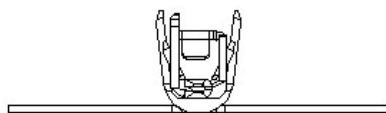
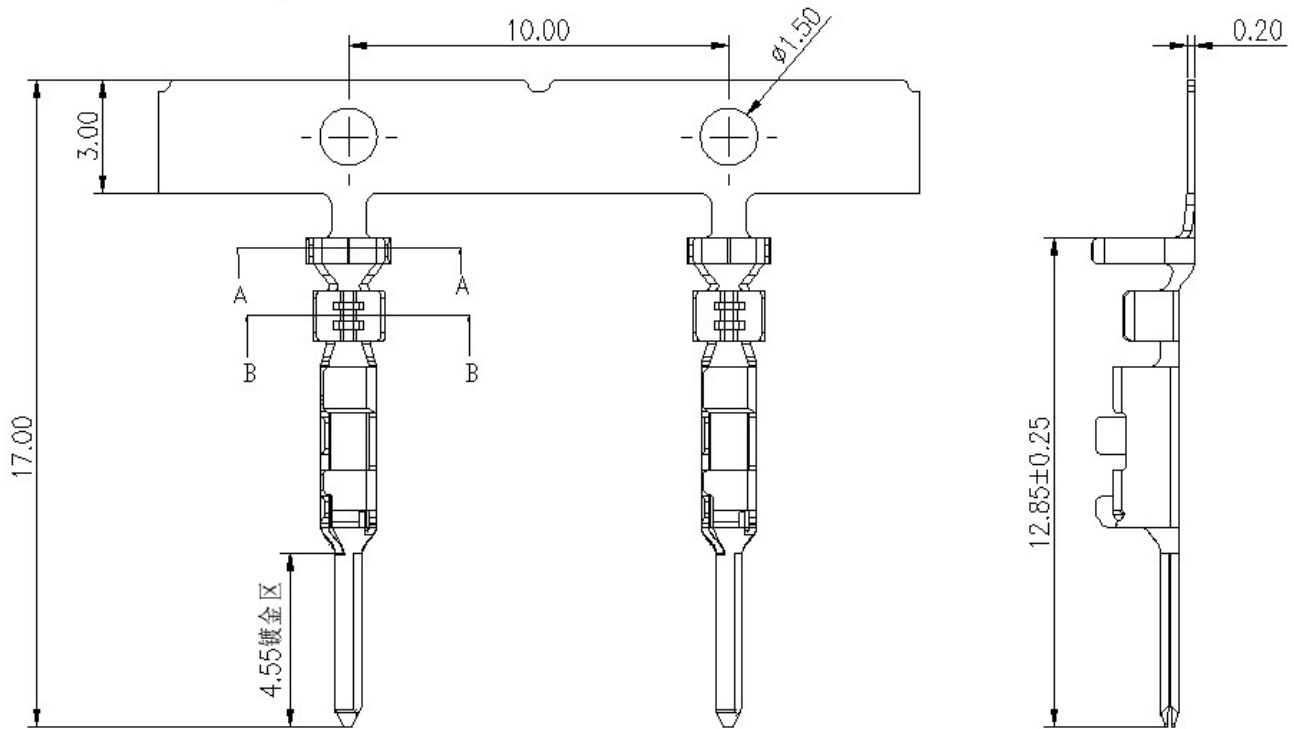
## 2.0mm Pitch Male Terminal

Specifications:  
 Material: Copper alloy  
 Wire Range: AWG#22~28  
 Rating: Current Rating: 3.0A  
 Operating Temperature Range: -55°~+150°C

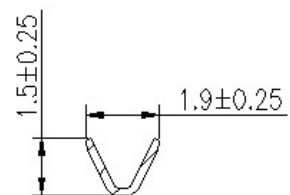


Ordering Information  
H20200TM-GX-01  
 1 2 3

- 1: — Series No.
- 2: — TM: Male Terminal
- 3: — Plated:  
 B: Au 5u" plated on contact Area,  
 M: Au 15u" plated on contact Area



SEC:A-A



SEC:B-B