

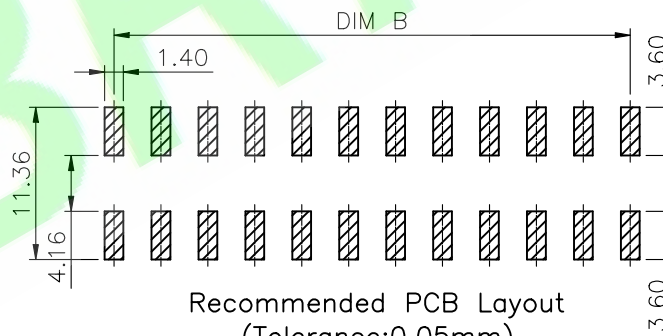
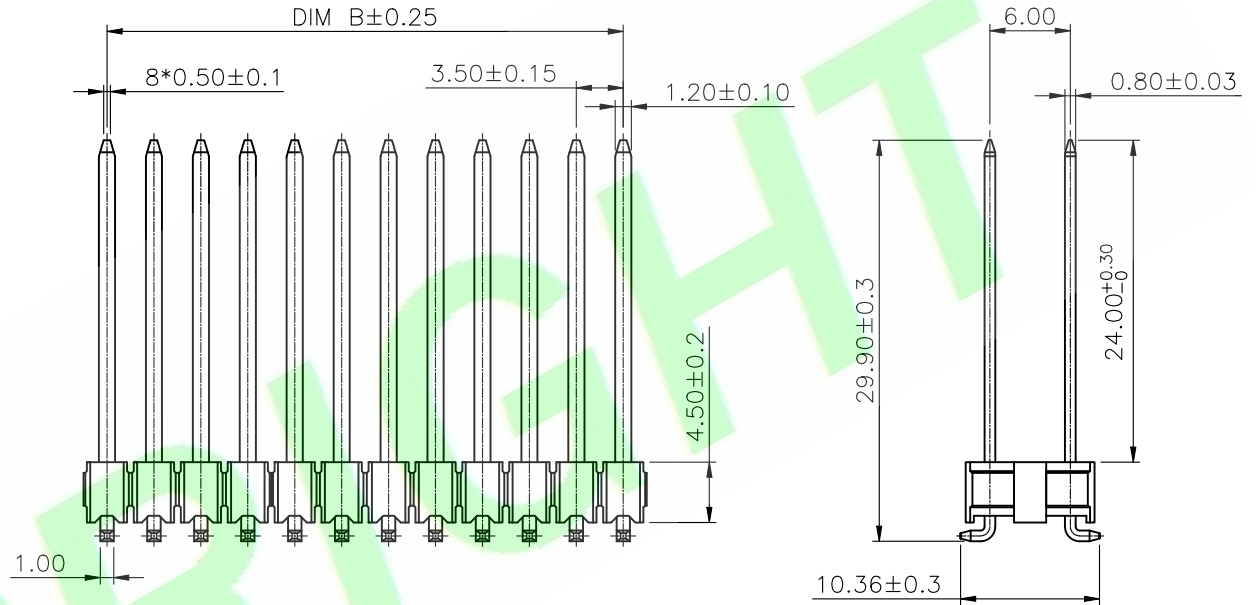
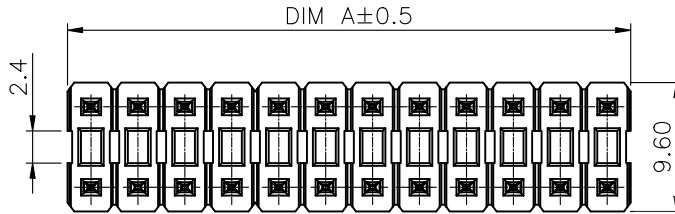
Specifications:
 Material And Finish:
 Insulator:LCP UL94V-0 Color:Black
 Contact:Brass
 Plated:See Ordering Information

Rating:
 Current Rating:5.0 Amp
 Operating Temperature Range:-40~+105°C

Electrical:
 Contact resistance:30m Ohm Max
 Insulator resistance:1000M ohm min.
 Withstanding Voltage:500V AC/Minute

Ordering Information
 35012M-XXS313-CX
 1 2 3 4 5

- 1: Series No.
- 2: M:SMT Type
- 3: No. of Positions
- 4: S:Matte Tin Plated
- 5: A:In bag
 B:In Tube
 C:In Tray
 G:Tape&Reel



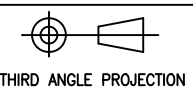
Recommended PCB Layout
 (Tolerance:0.05mm)

CKT SIZE	DIM A	DIM B
2X2	7.00	3.50
2X3	10.5	7.00
2X4	14.00	10.50
2X5	17.50	14.00
2X6	21.00	17.50
2X7	24.50	21.00
2X8	28.00	24.50
2X9	31.50	28.00
2X10	35.00	31.50

DR.BY.: Judyyan	GENERAL TOLERANCE:		PART NO : 35012M-XXS313-CX	
CHKD.: Tony	LINEAR	ANGLES	DWG. NO.:	
APPD.: Billy	x.: ±	x': ±5.0°	TITLE : 3.5X6.0mm Pitch Pin Header SMT type	
	x.x: ±0.50	x.x': ±3.0°	DATE: 14-May-2026	
	x.xx: ±0.25	x.xx': ±2.0°		
	x.xxx: ±0.10	x.xxx': ±1.0°		

HJBRIGHT® 東莞市華晶電子有限公司
 BRIGHT-E ELECTRONIC TECHNOLOGY LIMITED

SHEET: 1/1
 SCALE: 1:1
 UNIT: mm



A4

1X	ORIGINAL	Judyyan	
REV	DESCRIPTION	DR.BY	ECN. NO.