

Specifications:

Material And Finish:

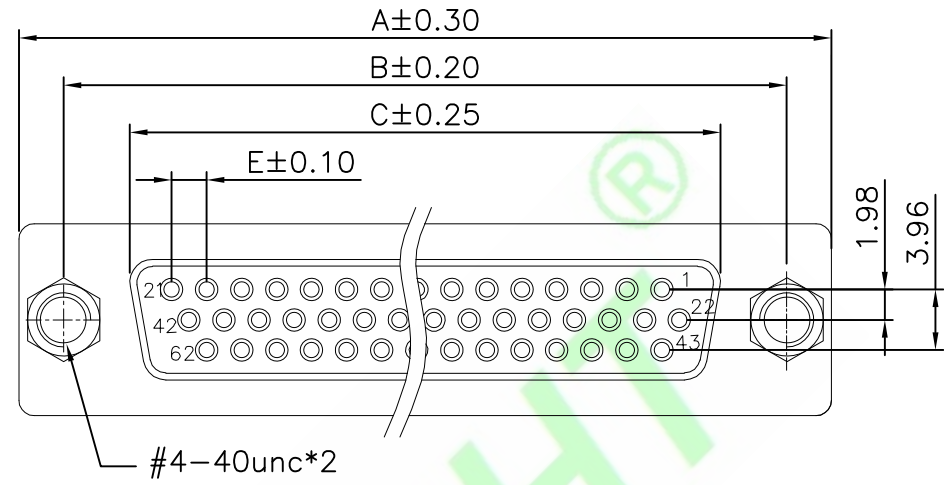
Insulator:PBT+30%GF UL94V-0
 Contact:Brass
 Shell:Steel With Nickel Plated.
 Plated:See Ordering Information

Rating:

Current Rating:5.0 Amp
 Voltage Rating:500V AC/DC
 Operating Temperature Range:-55~+105°C

Electrical:

Contact resistance:25m Ohm Max
 Insulator resistance:5000M ohm min.
 Withstanding Voltage:500V AC/Minute

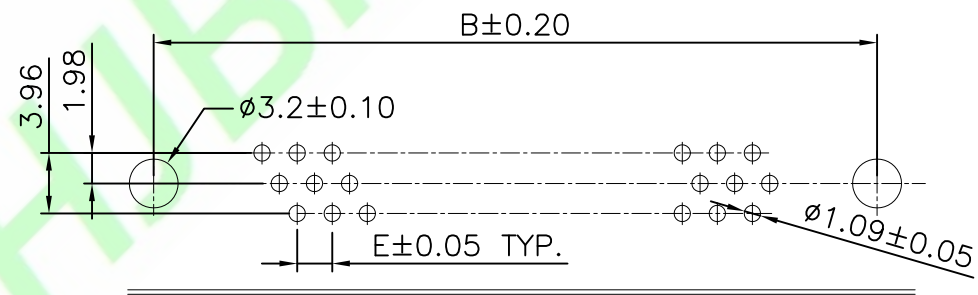
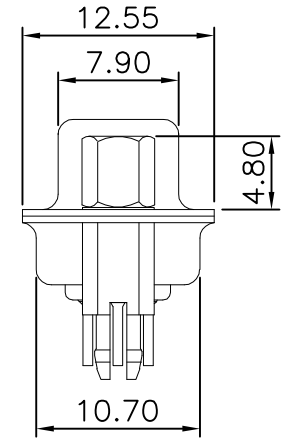
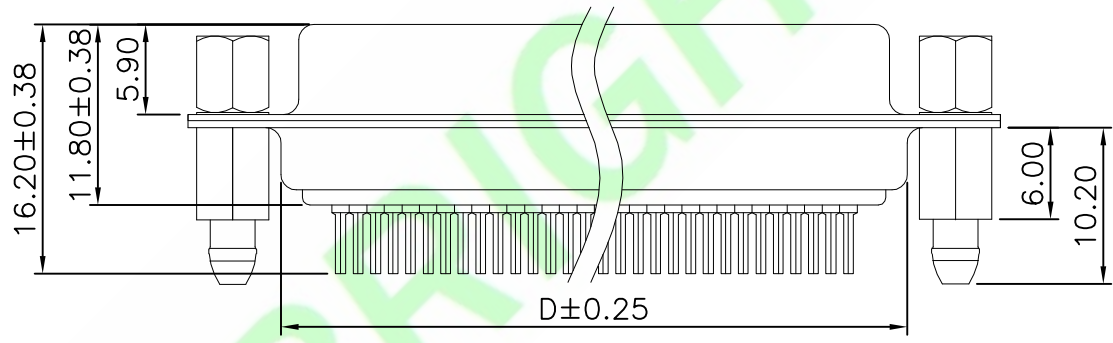


Ordering Information

DB03S1-XXFX-XX

1 2 3 4 5 6 7

- 1: — Series No.
- 2: — S1: Straight Dip Type
- 3: — No. of Positions
- 4: — F: Female
- 5: — A: Gold Flash
H: Selective Gold Flash
- 6: — B: Black
U: Blue
W: White
- 7: — A: In bag
C: In Tray



PIN	A	B	C	D	E
15	30.80	24.99	16.30	19.30	2.29
26	39.20	33.30	24.60	27.60	2.29
44	53.10	47.04	38.30	41.10	2.29
62	69.34	63.50	54.80	57.30	2.41

PCB LAYOUT

5X			
4X			
3X			
2X			
1X	ORIGINAL	Samson	
REV.	DESCRIPTION	DR.BY	ECN. NO.

DR.BY: Samson	GENERAL TOLERANCE:	
CHKD.: Tony	LINEAR	ANGLES
APPD.: Billy	x.: ±0.38	x': ±5.0°
	x.x: ±0.35	x.x': ±3.0°
	x.xx: ±0.25	x.xxx: ±2.0°
	x.xxx: ±0.15	x.xxxx: ±1.0°

PART NO : DB03S1-XXFX-XX
DWG. NO.:
TITLE : HDP Female Head 180 degree Rivet Harpoon Lock Screw
DATE: 12-10-2016

HJBRIGHT 东莞市華晶電子有限公司
 BRIGHT-E ELECTRONIC TECHNOLOGY LIMITED

SHEET: 1/1
 SCALE: 1:1
 UNIT: mm

THIRD ANGLE PROJECTION

A4