

Specifications:

Material And Finish:

Insulator:PBT+30%GF UL94V-0
 Contact:Brass
 Shell:Steel With Nickel Plated.
 Plated:See Ordering Information

Rating:

Current Rating:5.0 Amp
 Voltage Rating:500V AC/DC
 Operating Temperature Range:-55~+105°C

Electrical:

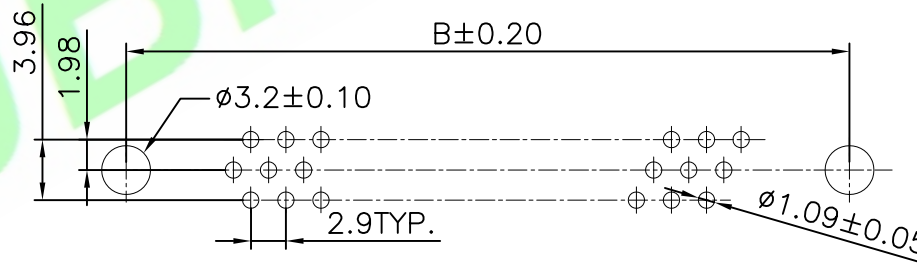
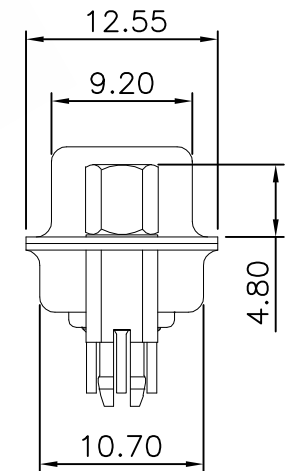
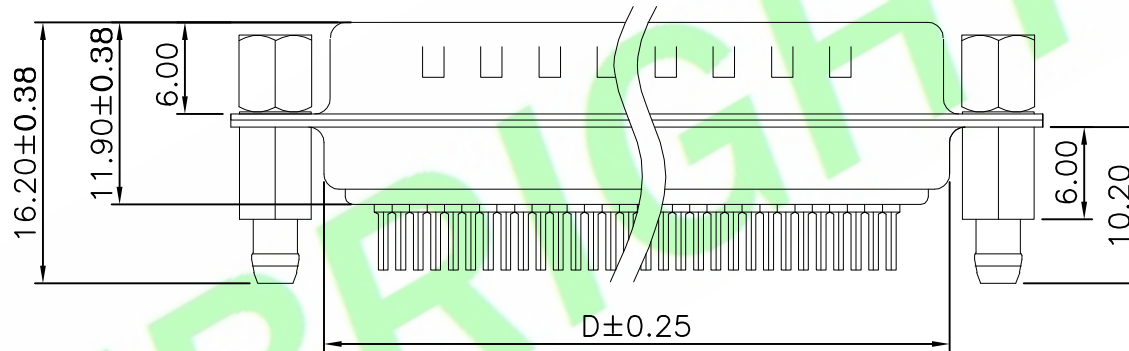
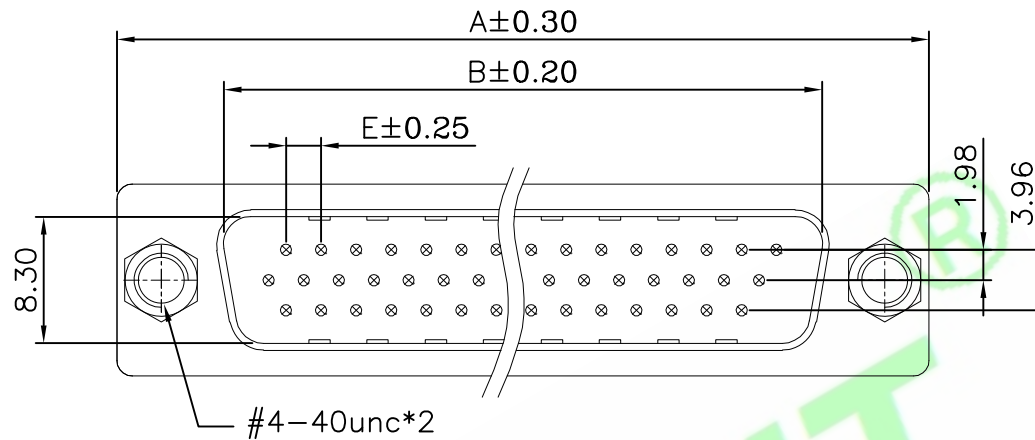
Contact resistance:25m Ohm Max
 Insulator resistance:5000M ohm min.
 Withstanding Voltage:500V AC/Minute

Ordering Information

DB03S1-XXMX-XX

1 2 3 4 5 6 7

- 1: Series No.
- 2: S1: Straight Dip Type
- 3: No. of Positions
- 4: M: Male
- 5: A: Gold Flash
H: Selective Gold Flash
- 6: B: Black
U: Blue
W: White
- 7: A: In bag
C: In Tray



PCB LAYOUT

PIN	A	B	C	D	E
15	30.80	24.99	16.90	19.30	2.29
26	39.20	33.30	25.25	27.60	2.29
44	53.10	47.04	38.96	41.10	2.29
62	69.34	63.50	55.42	57.30	2.41

5X			
4X			
3X			
2X			
1X	ORIGINAL	Samson	
REV.	DESCRIPTION	DR.BY	ECN. NO.

DR.BY:	Samson	
CHKD.:	Tony	
APPD.:	Billy	
GENERAL TOLERANCE:		
LINEAR		ANGLES
X.: ±0.38	X': ±5.0°	
X.X: ±0.35	X.X': ±3.0°	
X.XX: ±0.25	X.XX': ±2.0°	
X.XXX: ±0.15	X.XXX': ±1.0°	

PART NO :	DB03S1-XXMX-XX
DWG. NO.:	
TITLE :	HDP Male Head 180 degree Rivet Harpoon Lock Screw
DATE:	12-10-2016

HJBRIGHT 東莞市華晶電子有限公司
 BRIGHT-E ELECTRONIC TECHNOLOGY LIMITED

SHEET: 1/1
 SCALE: 1:1
 UNIT: mm

THIRD ANGLE PROJECTION

A4