

Specifications:

Material And Finish:

Insulator:LCP UL94V-0
 Contact:Copper alloy
 Plated:See Ordering Information

Rating:

Current Rating:12.0 Amp
 Voltage Rating:250V AC/DC
 Operating Temperature Range:LCP:-55~ +150°C

Electrical:

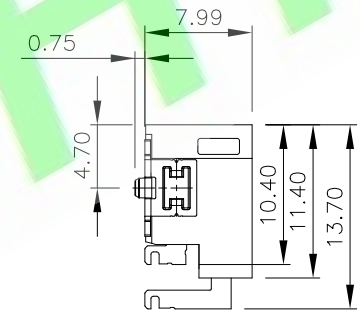
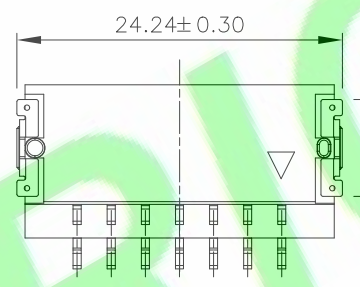
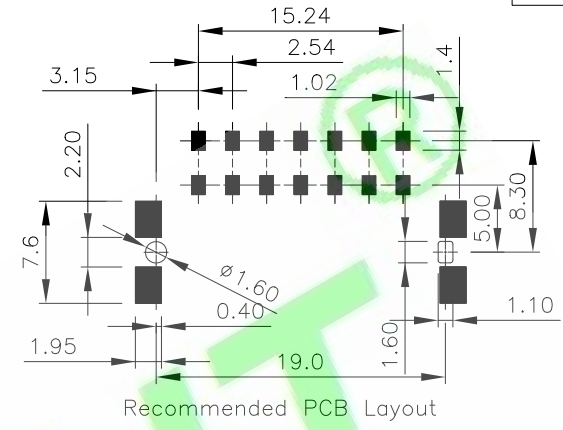
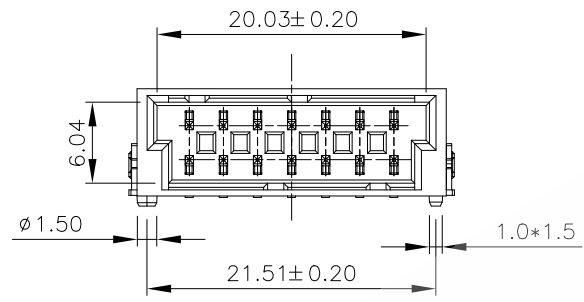
Contact resistance:20m Ohm Max
 Insulator resistance:1000M ohm min.
 Withstanding Voltage:1000V AC/Minute

Ordering Information

M25400H-14X-XX-D

1 2 3 4 5 6

- 1: — Series No.
- 2: — H:Horizontal SMT Type
- 3: — No. of Positions
- 4: — S:Matte Tin on tail
 H:Gold flash on contact;
 Matte Tin on tail
- 5: — 01:A Type White
 02:B Type Red
 03:C Type Green
 04:D Type Blue
 05:E Type Black
- 6: — D:Tape&Reel



A Type White	B Type Red	C Type Green	D Type Blue	E Type Black
7.04, 0.58	2.74, 5.08	3.50, 4.80	5.00, 3.00	7.04, 0.58
1.18, 6.44	6.68, 1.34	5.40, 2.48	4.00, 3.50	1.18, 6.44

DR.BY.: Xiao	GENERAL TOLERANCE:	PART NO : M25400H-14X-XX-D
CHKD.: Judyyan	LINEAR	DWG. NO.:
APPD.: Billy	ANGLES	TITLE :
	x.: ±0.30	M2.54 SRC-B Horizontal SMT Type
	x.x: ±0.20	DATE: 11-Nov-2022
	x.xxx: ±0.10	
	x.x': ±5.0°	
	x.x': ±3.0°	
	x.xx': ±2.0°	
	x.xxx': ±1.0°	

HJBRIGHT® 东莞市華晶電子有限公司
 BRIGHT-E ELECTRONIC TECHNOLOGY LIMITED

SHEET: 1/1
 SCALE: 1:1
 UNIT: mm

THIRD ANGLE PROJECTION

A4

1X	ORIGINAL	Xiao	
REV.	DESCRIPTION	DR.BY	ECN. NO