

Specifications:

Material And Finish:

Contact: CuZn30

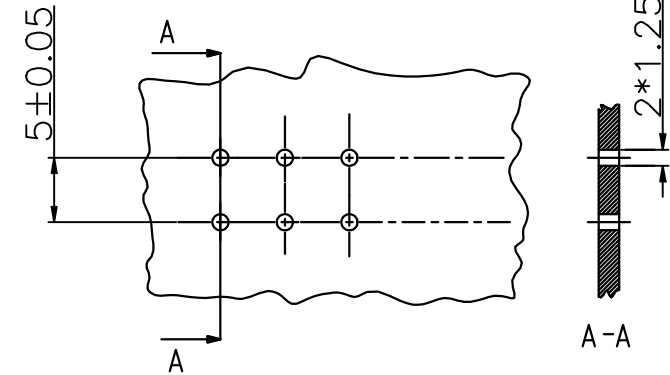
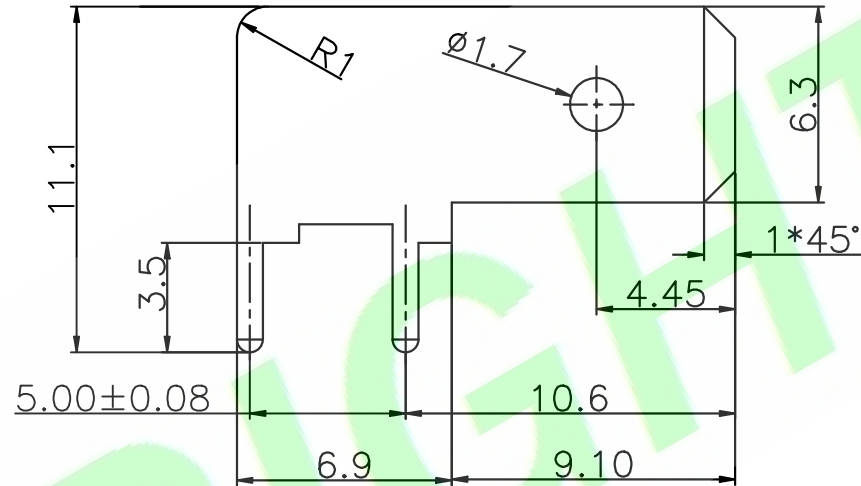
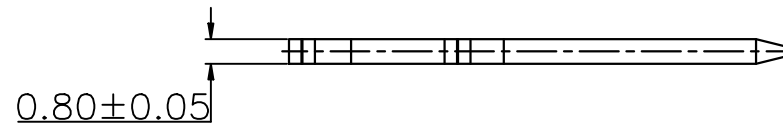
Plated: 3–8um Sn over 0.8–5.0um Ni

Component glow wire resistant
(GWT 750°C), testing acc. to IEC
60695-2-11, assessment acc.
to IEC 60335-1 (flame < 2S)
Material group 2 IIIa (CTI ≥ 350)


Ordering Information

T250080R-02-SA
1 2 34

- 1: — Series No.
2: — R: R/A Type
3: — S: Matte Tin Plated
4: — A: In Bag



EMPFOHLENES LEITERPLATTEN LOCHBILD
RECOMMENDED PCB HOLE PATTERN

| | | | | | | | | | |
|-------------------|--------------------|---------------|--|--|----------|------------------------|------------|---|----|
| DR.BY.: Bin | GENERAL TOLERANCE: | | PART NO : T250080R-02-SA | <div>HJBRIGHT® 東莞市華晶電子有限公司</div> <div>BRIGHT-E ELECTRONIC TECHNOLOGY LIMITED</div> | | | | | |
| | LINEAR | ANGLES | | | | | DWG. NO.: | | |
| CHKD.: Judyyan | x.: ±0.30 | x': ±5.0° | TITLE : 250 Straight Cutting Terminal | | | | SHEET: 1/1 |  | A4 |
| | x.x: ±0.20 | x.x': ±3.0° | | | | | SCALE: 1:1 | | |
| APPD.: Billy | x.xx: ±0.15 | x.xx': ±2.0° | | DATE: 7-Nov-2024 | UNIT: mm | THIRD ANGLE PROJECTION | | | |
| | x.xxx: ±0.10 | x.xxx': ±1.0° | | | | | | | |

A4