

RoHS Compliant



Specifications:
Material And Finish:
Insulator:UL94V-0
Contact:Brass
Shell: Copper Alloy SPCC
Plated:See Ordering Information

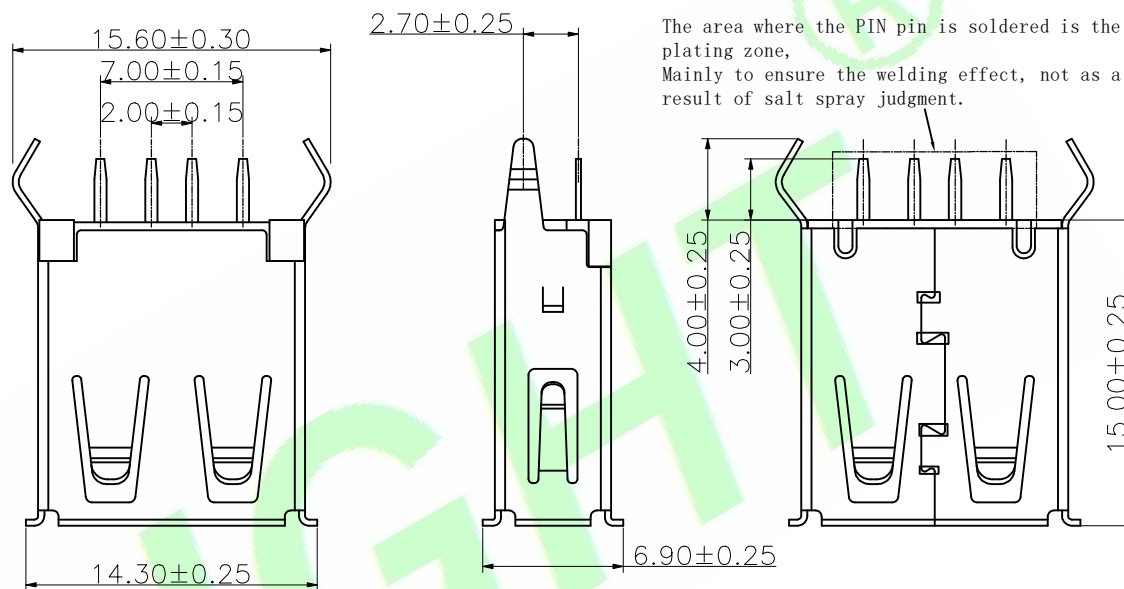
Rating:
Current Rating:3.0 Amp
Voltage Rating:30V AC/DC
Operating Temperature Range:-40°~+125°C

Electrical:
Contact resistance:30m Ohm Max
Insulator resistance:1000M ohm min.
Withstanding Voltage:500V AC/Minute

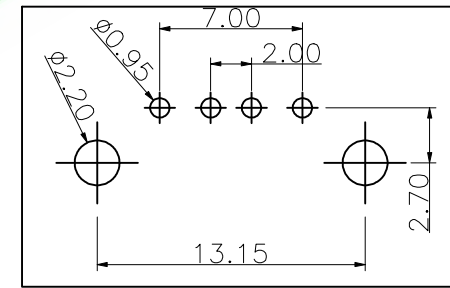
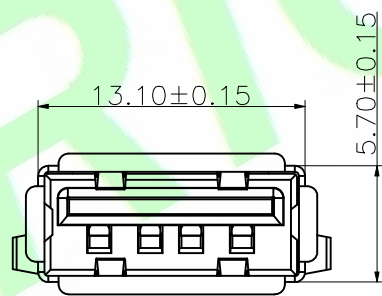
Mechanical:
Connector Mate and Unmate Force:
Mate force:3.57kgf(MAX)
Unmate force:1.02kgf(MIN)
Terminal Retention :1.0kgf(MIN)
Salt spray test:24H

Ordering Information
USB20AF-04SH-01-XXX
1 2 3 4 5 6 7 8

- 1: — Series No.
2: — AF:AF Type
3: — No. of Positions
4: — S: Straight Type
5: — H: Gold flash on contact; Tin on tail
6: — P: PBT
C: LCP
7: — Color:
B: Black
N: Natural
8: — C: In Tray
G: In Tape & Reel



The area where the PIN pin is soldered is the tin plating zone, Mainly to ensure the welding effect, not as a result of salt spray judgment.



PCB LAYOUT

1X	ORIGINAL	Bin	
REV.	DESCRIPTION	DR.BY	ECN. NO.

DR.BY.: Bin	GENERAL TOLERANCE:		PART NO : USB20AF-04SH-01-XXX
	LINEAR	ANGLES	
	X.: ±0.30	X': ±5.0°	
	X.X: ±0.20	X.X': ±3.0°	
	X.XX: ±0.15	X.XX': ±2.0°	
CHKD.: Judyyan	X.XXX: ±0.10	X.XXX': ±1.0°	DWG. NO.: TITLE : USB AF 180 Degree direct insertion 15.0 Bending feet and curling edges
APPD.: Billy			
			DATE: 30-May-2024

HJBRIGHT® 东莞市華晶電子有限公司
BRIGHE-E ELECTRONIC TECHNOLOGY LIMITED

SHEET: 1/1		A4
SCALE: 1:1		
UNIT: mm		

THIRD ANGLE PROJECTION